

DRUM ROLLER MAINTENANCE

Drum roller adjustment and maintenance is CRITICAL to maintaining optimum performance of your Con-Tech mixer. Failing to follow a regular WEEKLY maintenance schedule can result in premature wear, costly repairs, and downtime.

The drum rollers should be inspected every week (for alignment and bearing wear) and greased using a General Purpose EP #2 Lithium grease. The greasing procedure should consist of pumping enough grease into the rollers until it comes OUT of the seal area clean and free of contaminants. If you have any service issues, call Con-Tech service at **507-374-2239**. Please observe ALL OSHA lockout-tag out procedures when performing any type of work or maintenance on your vehicles.

ROLLER ALIGNMENT STEPS

1 DRUM ROLLER ALIGNMENT PREP

If your Con-Tech mixer is equipped with a BridgeKing trailer axle, lower it to the ground. Once the axle is on the ground turn off the ignition, perform Lockout / Tag Out procedure, release the pressure on the BridgeKing trailer and relieve any stress on the truck frame. All pusher axles should be up. Truck must be unloaded. *See Image A*

2 DRUM ROLLER GAP

Make sure your rollers are shimmed to meet the proper air gap of .012" - .030" between the roller and the track. Double check your gap after all steps are complete. *See Image B*

3 ROLLER SPACING

Using a 3/4" thick spacer, place it on the forward face of the roller track and adjust the roller to be flush with the 3/4" spacer or dimension. Do this to both rollers. *See Image C*

4 ROLLER ALIGNMENT

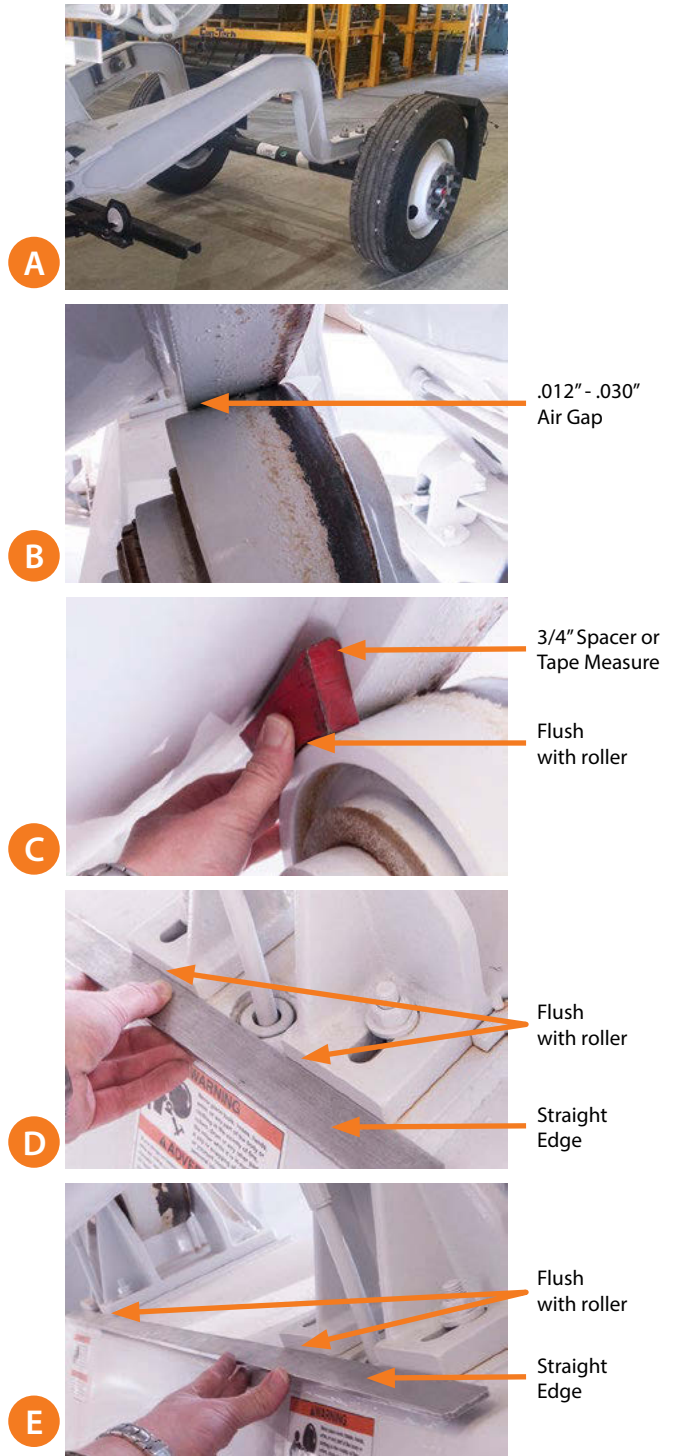
Using a straight edge or a 4' level, align both front edges of the roller foot to be flush with the straight edge. This must be done while maintaining the 3/4" offset spacing on the roller track face. *See Images D & E*

* Visually inspect roller to roller track contact area when loaded to verify proper shimming. Variances in chassis frames and size of load will affect how much shimming is required.

* Each drum roller is equipped with two tapered roller bearings. Seals are provided to exclude water and dirt. If it becomes necessary to replace the bearings the assembly must be thoroughly cleaned before installing the new bearings. Pack the bearings with a General Purpose EP #2 Lithium grease. (See lube chart and maintenance schedule).

* Troubleshooting Roller Noise

If a snapping, popping or grinding noise is heard coming from the roller area, you can spray water or grease on the track/roller. If noise persists, remove, repair, or replace roller. If the noise goes away when sprayed or greased, you must align the rollers.



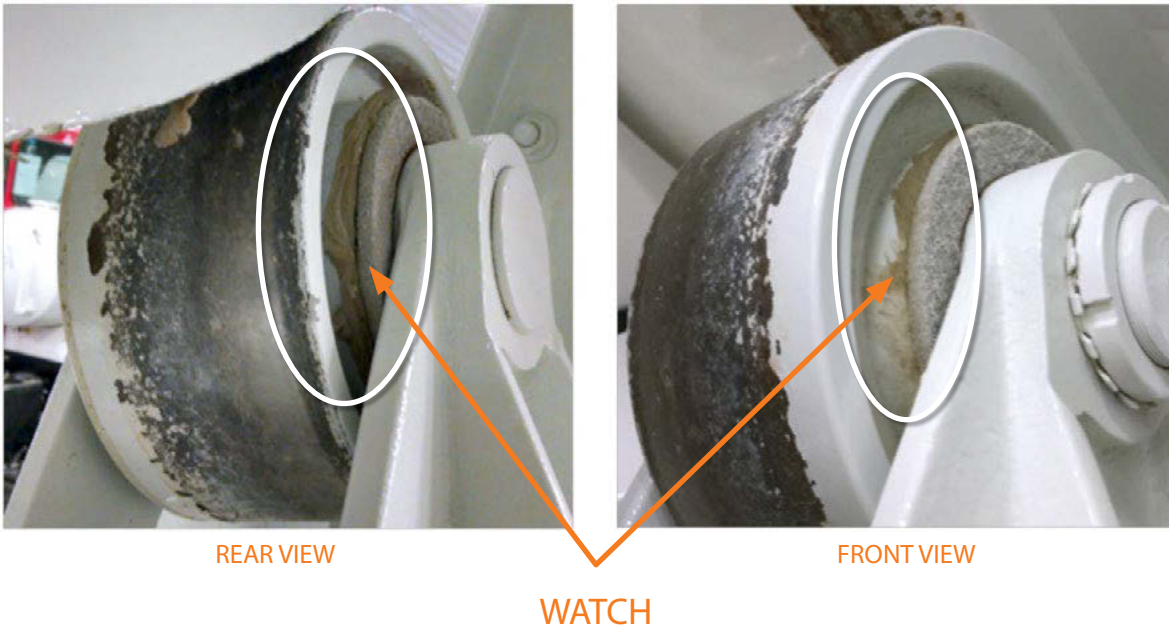
65740 State Hwy 56, Dodge Center, MN 55927 phone 507-374-2239 fax 507-374-1094

© 2017 Con-Tech Manufacturing, Inc. P/N D0000008

DRUM ROLLER MAINTENANCE

GREASING THE ROLLER

- Greasing intervals are very important. **GREASE ROLLERS WEEKLY** using an EP#2 lithium based grease. It is **NOT POSSIBLE** to over grease rollers.
- Since roller seals are designed to **PURGE** grease, it is imperative that the roller is greased regularly and with sufficient grease to **FLUSH OUT** contaminants. During the greasing process a roller will be completely greased when you start to see **CLEAN** grease coming out of the roller lip seal/felt dust ring area on both the front and rear sides of the roller.



65740 State Hwy 56, Dodge Center, MN 55927 phone 507-374-2239 fax 507-374-1094

© 2017 Con-Tech Manufacturing, Inc. P/N D0000008