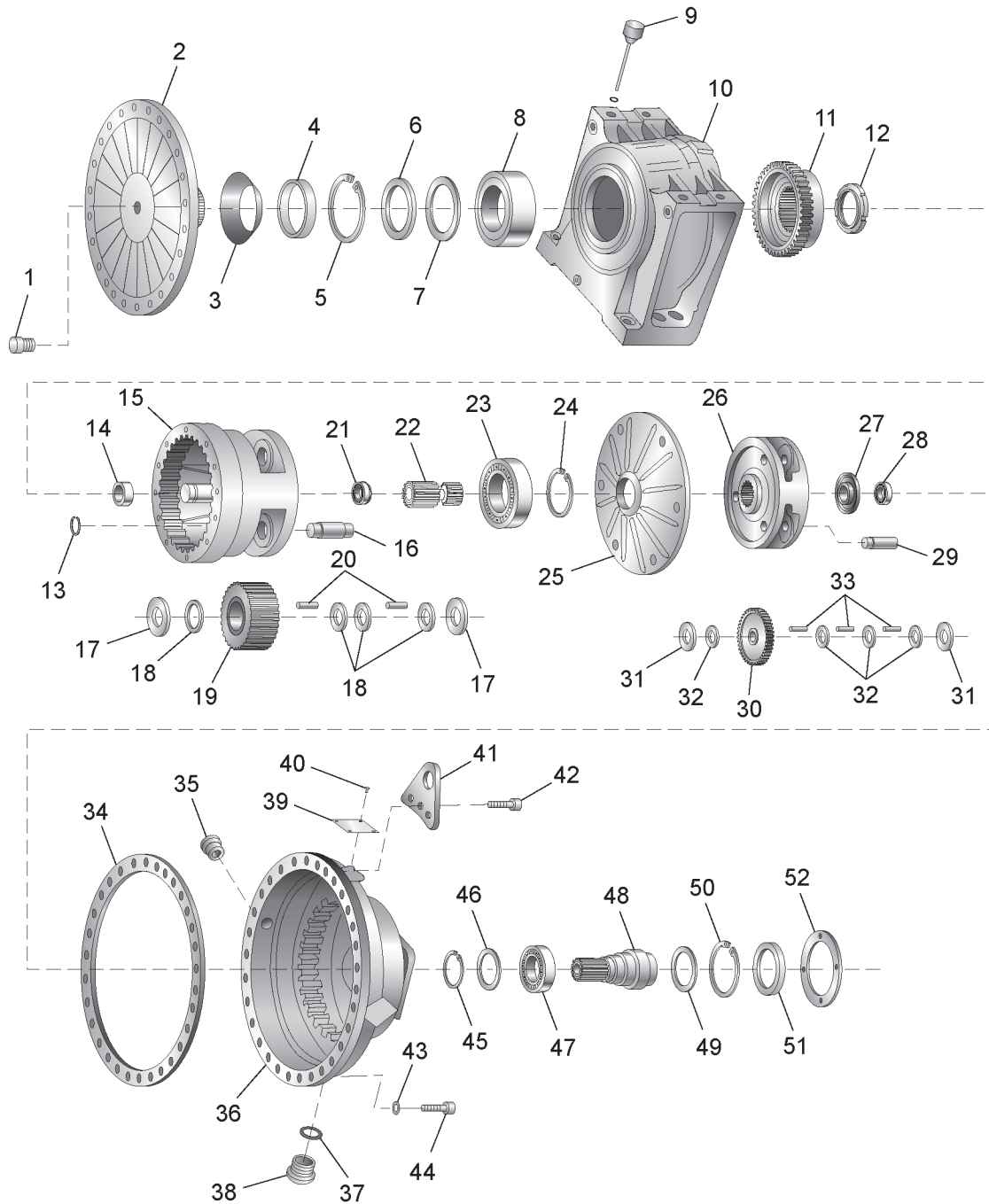


ZF MODEL P-5300



MPPM The right parts, *fast.*

| ZF MODEL P-5300 | | | |
|-----------------|--------------|-------------|---------------------|
| Item | MTM Part No. | ZF Part No. | Description |
| | 0001291 | P-5300EX | GEARBOX-REBUILT |
| | NPN | P-5300SK | SEAL KIT |
| | NPN | P-5300BK | BEARING KIT |
| 1. | 0215421 | 0631405018 | PLUG |
| 2. | 0215420 | 4108303239 | BEARING FLANGE |
| 3. | 0215301 | 0734307142 | SEALING COLLAR |
| 4. | 0215302 | 4108306102 | RING |
| 5. | 0215303 | 0630502067 | RETAINING RING |
| 6. | 0215304 | 0630004189 | THRUST DISC |
| 7. | 0215605 | 0730100233 | SHIM 0.2MM |
| 7. | 0215306 | 0730100584 | SHIM 0.3MM |
| 7. | 0215307 | 0730003018 | SHIM 0.5MM |
| 7. | 0215308 | 0730003019 | SHIM 0.7MM |
| 8. | 0215309 | 0750117012 | ROLLER BEARING |
| 9. | 0215482 | 4108203149 | OIL DIPSTICK |
| 10. | 0215480 | 4108201199 | BEARING HOUSING |
| 11. | 0215312 | 4108306101 | CLUTCH HOUSING |
| 12. | 0215313 | 0737502084 | SLOTTED NUT |
| 13. | 0215315 | 0630501031 | RETAINING RING |
| 14. | 0215314 | 0635285013 | JOINT BEARING |
| 15. | 0215419 | 4108303219 | PLANETARY CARRIER |
| 16. | 0215321 | 4108306091 | PIN |
| 17. | 0215317 | 0730102684 | THRUST WASHER |
| 18. | 0215319 | 0730102816 | INTERMEDIATE WASHER |
| 19. | 0215318 | 4108306146 | PLANETARY GEAR |
| 20. | 0215320 | 0735470038 | NEEDLE BEARING |
| 21. | 0215322 | 0635331269 | BALL BEARING |
| 22. | 0215331 | 4108306147 | SUN GEAR |
| 23. | 0215422 | 0635331260 | BALL BEARING |
| 24. | 0215423 | 0630503018 | SNAP RING |
| 25. | 0215401 | 4108301293 | BEARING COVER |
| 26. | 0215400 | 4108302093 | PLANETARY CARRIER |
| 27. | 0215339 | 4108302007 | BEARING PLATE |
| 28. | 0215340 | 0635332196 | BALL BEARING |
| 29. | 0215414 | 4108302062 | BEARING PIN |
| 30. | 0215413 | 4108302088 | PLANETARY GEAR |
| 31. | 0215485 | 0730106813 | THRUST WASHER |
| 32. | 0215412 | 0730102644 | INTERMEDIATE WASHER |
| 33. | 0215411 | 0735470120 | NEEDLE BEARING |
| 34. | 0215402 | 4108306172 | GASKET |
| 35. | 0215397 | 0632610066 | OIL SIGHT GLASS |
| 36. | 0215484 | 4108201194 | HOUSING |
| 37. | 0215424 | 0634304287 | O- RING |
| 38. | 0215326 | 0636302045 | SCREW PLUG |

MPPM The right parts, *fast.*

| ZF MODEL P-5300 | | | |
|-----------------|-------------------------|----------------------------|-----------------------|
| Item | MTM Part No. | ZF Part No. | Description |
| 39. | 0215344 | 0730365058 | NAME PLATE |
| 40. | 0215345 | 0631311009 | GROOVED PIN |
| 41. | 0215417 | 4108302063 | LIFTING BRACKET |
| 42. | 0215478 | 0636101729 | SOCKET HEAD CAP SCREW |
| 44. | 0215477 | 0636101667 | SOCKET HEAD CAP SCREW |
| 45. | 0215407 | 0630531064 | RETAINING RING |
| 46. | 0215408 | 0730102341 | SHIM |
| 47. | 0215465 | 0635331223 | BALL BEARING |
| 48. | 0215403 | 4108302085 | INPUT SHAFT 21 SPLINE |
| 49. | 0215467 | 0630000041 | WASHER |
| 50. | 0215405 | 0630502039 | RETAINING RING |
| 51. | 0215409 | 0634300610 | SHAFT SEAL |
| 52. | 0215396 | 4108303213 | GASKET |