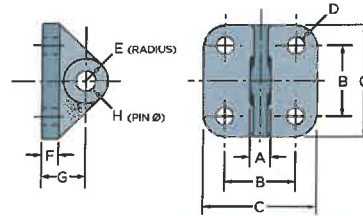


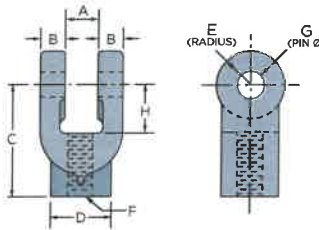
STANDARD MOUNTING BRACKET AND PIN



Mounting Brackets of high grade malleable iron or steel plate stock are designed to fit the blank end of Model E cylinders or into the slot of the clevises described below. Order by size and part number.

| CYL. DIA. | A | B | C | D | E | F | G | BRACKET | | MTG. PIN "H" | PIN | |
|-----------|-------|-------|--------|--------|-------|-------|--------|------------|-------------|--------------|------------|-------------|
| | | | | | | | | FORMER P/N | CURRENT P/N | | FORMER P/N | CURRENT P/N |
| 1-1/2 | 7/16 | 1-3/4 | 2-3/4 | 13/32 | 1/2 | 3/8 | 1-3/16 | 1430CY | 1801L00 | 3/8 | 3253CY-1 | 3221L46-1 |
| 2 | 7/16 | 2 | 3-1/4 | 17/32 | 5/8 | 1/2 | 1-3/8 | 1630CY | 1802L46 | 1/2 | 3253CY-3 | 3221L46-3 |
| 2-1/2 | 7/16 | 2 | 3-1/4 | 17/32 | 5/8 | 1/2 | 1-3/8 | 1630CY | 1802L46 | 1/2 | 3253CY-3 | 3221L46-3 |
| 3 | 7/16 | 2 | 3-1/4 | 17/32 | 5/8 | 1/2 | 1-3/8 | 1630CY | 1802L46 | 1/2 | 3253CY-3 | 3221L46-3 |
| 4 | 5/8 | 3-1/4 | 4-1/2 | 17/32 | 7/8 | 1/2 | 1-3/4 | 1796CY | 1803L46 | 3/4 | 3253CY-4 | 3221L46-4 |
| 5 | 5/8 | 3-1/4 | 4-1/2 | 17/32 | 7/8 | 1/2 | 1-3/4 | 1796CY | 1803L46 | 3/4 | 3253CY-4 | 3221L46-4 |
| 6 | 7/8 | 4-1/4 | 5-1/2 | 17/32 | 1-1/8 | 5/8 | 2 | 1797CY | 1804L06 | 7/8 | 3253CY-5 | 3221L46-5 |
| 8 | 1 | 5 | 6-1/2 | 21/32 | 1-1/4 | 3/4 | 2-1/2 | 1798CY | 1805L07 | 1 | 3253CY-6 | 3221L46-6 |
| 10 | 1-1/4 | 6 | 8 | 25/32 | 1-1/2 | 1 | 3 | 1799CY | 1806L08 | 1-1/4 | 3253CY-7 | 3221L46-7 |
| 12 | 1-3/4 | 6-3/4 | 10 | 1-1/16 | 2 | 1-1/4 | 3-1/2 | 1800CY | 1807L09 | 1-1/2 | 3253CY-8 | 3221L46-8 |
| 14 | 2-1/4 | 8 | 10-1/2 | 1-5/16 | 2-1/8 | 1-1/2 | 3-3/4 | 2958CY | 1767L46 | 1-3/4 | 3253CY-9 | 3221L46-9 |

STANDARD FEMALE CLEVIS AND PIN



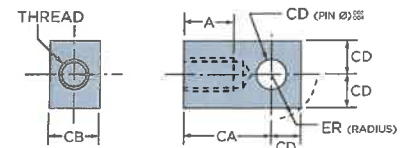
Clevises of high grade malleable iron are available for all standard model and size Class 1 and 2 cylinders. Clevises for any diameter cylinder are threaded for that particular standard 1 rod end. Class 1 and 2 cylinders with oversize rod and Class M cylinders will therefore require a larger clevis unless the rod end is turned down. Be sure to specify when ordering. Special clevises available made to order.

| CYL. DIA.* | THREAD "F" | A | B | C | D | E | G | H | CLEVIS | | MTG. PIN "G" | PIN | |
|------------|------------|---------|-------|-------|-------|-------|-------|-------|------------|-------------|--------------|------------|-------------|
| | | | | | | | | | FORMER P/N | CURRENT P/N | | FORMER P/N | CURRENT P/N |
| 1-1/2 | 5/8-18 | 17/32 | 3/8 | 1-5/8 | 1 | 1/2 | 1/2 | 3/4 | 4330CY | 1787L46 | 1/2 | 3253CY-3 | 3221L46-3 |
| 2 | 5/8-18 | 17/32 | 3/8 | 1-5/8 | 1 | 1/2 | 1/2 | 3/4 | 4330CY | 1787L46 | 1/2 | 3253CY-3 | 3221L46-3 |
| 2-1/2 | 3/4-16 | 17/32 | 1/2 | 2 | 1-1/4 | 5/8 | 1/2 | 7/8 | 4331CY | 1788L46 | 1/2 | 3253CY-3 | 3221L46-3 |
| 3 | 3/4-16 | 17/32 | 1/2 | 2 | 1-1/4 | 5/8 | 1/2 | 7/8 | 4331CY | 1788L46 | 1/2 | 3253CY-3 | 3221L46-3 |
| 4 | 1-14 | 25/32 | 3/4 | 2-5/8 | 1-1/2 | 3/4 | 3/4 | 1-1/8 | 4332CY | 1789L46 | 3/4 | 3253CY-4 | 3221L46-4 |
| 5 | 1-14 | 25/32 | 3/4 | 2-5/8 | 1-1/2 | 3/4 | 3/4 | 1-1/8 | 4332CY | 1789L46 | 3/4 | 3253CY-4 | 3221L46-4 |
| 6 | 1-1/4-12 | 1-1/32 | 15/16 | 3-1/4 | 1-3/4 | 1-1/8 | 7/8 | 1-3/8 | 4333CY | 1790L06 | 7/8 | 3253CY-5 | 3221L46-5 |
| 8 | 1-3/4-12 | 1-9/32 | 1 | 3-3/4 | 2-1/2 | 1-1/4 | 1 | 1-1/2 | 16989CY | 1791L07 | 1 | 3253CY-6 | 3221L46-6 |
| 10 | 2-12 | 1-17/32 | 1-1/4 | 4-3/4 | 3 | 1-1/2 | 1-1/4 | 1-3/4 | 1373CY | 1792L08 | 1-1/4 | 3253CY-7 | 3221L46-7 |
| 12 | 2-1/2-12 | 2-1/32 | 1-1/2 | 5-7/8 | 3-1/2 | 1-3/4 | 1-1/2 | 2-1/8 | 1374CY | 1793L46 | 1-1/2 | 3253CY-8 | 3221L46-8 |
| 14* | 2-1/2-12 | 2-1/32 | 1-1/2 | 5-7/8 | 3-1/2 | 1-3/4 | 1-1/2 | 2-1/8 | 1374CY | 1793L46 | 1-1/2 | 3253CY-8 | 3221L46-8 |

- * = Indicates Class 1 and 2 cylinder diameter with Standard 1 NF rod end which clevis will fit.
- = 1-1/2-12 thread clevis 7286L07 (4334CY) available. Dimensions on 1791L07 (18510CY) apply.
- = For 5 Rod only on 14" diameter.

STANDARD ROD EYE AND PIN

| THREAD | ROD EYE | | | | | PIN | | | |
|----------|---------|---------|-------|-------|--------|------------|-------------|------------|-------------|
| | A | CA | CB | CD | ER | FORMER P/N | CURRENT P/N | FORMER P/N | CURRENT P/N |
| 5/8-18 | 7/8 | 1-5/8 | 1 | 1/2 | 3/4 | 21789CY | 1811L59 | 3253CY-3 | 3221L46-3 |
| 3/4-16 | 1-1/8 | 2-1/16 | 1-1/4 | 3/4 | 1-1/16 | 7061CY | 1812L59 | 3253CY-4 | 3221L46-4 |
| 1-14 | 1-5/8 | 2-13/16 | 1-1/2 | 1 | 1-7/16 | 7062CY | 1813L59 | 3253CY-6 | 3221L46-6 |
| 1-1/4-12 | 2 | 3-7/16 | 2 | 1-3/8 | 2 | 7063CY | 1814L59 | 3253CY-4 | 3221L46-4 |
| 1-3/4-12 | 2-1/4 | 4 | 2-1/2 | 1-3/4 | 2-1/16 | 21790CY | 1816L59 | 3253CY-9 | 3221L46-9 |
| 2-12 | 3 | 5 | 2-1/2 | 2 | 2-1/4 | 23464CY | 1819L59 | 3253CY-11 | 3221L46-11 |
| 2-1/2-12 | 3-1/2 | 6-1/8 | 3 | 3 | 3-1/4 | 23465CY | 1823L59 | 3253CY-7 | 3221L46-7 |



Rod eyes of mild steel are available for all standard model and size Class 1 and Class 2 cylinders with 1 rod ends. Other sizes of rod eyes are also available. Pins for rod eye, are not furnished unless requested.

TYPICAL PIN STYLES

