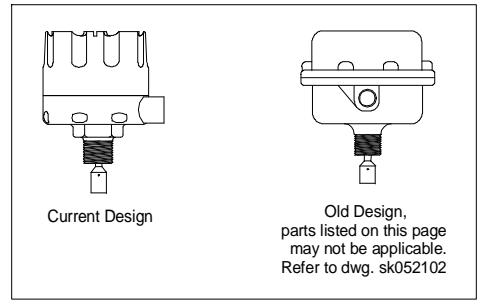
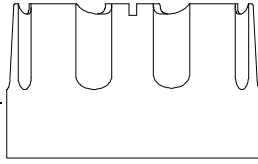


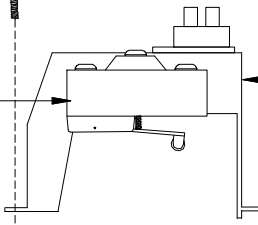
Housing Cover,



Circuit Board, Excitation,  
12/24v DC Operation Only, 1-1960

Screw w/ Loc Washer,  
1-0032, (four required)

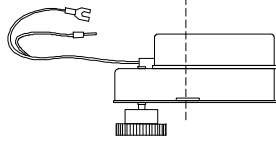
S.P.D.T. Switch Only, 1-5065  
D.P.D.T. Switch Only, 1-5066



Switch Bracket Subassembly,  
Two S.P.D.T. Switches, 1-4163

Switch Bracket Subassembly,  
One S.P.D.T. Switch and  
One D.P.D.T. Switch, 1-4164

Screw w/ Loc Washer,  
1-0031, (two required)



Switch Bracket Subassembly,  
Two S.P.D.T. Switch for 12/24v  
DC Operation KA/KAX models  
beginning May 2005, 1-4173

Snap Ring, 1-4010

Return Spring with  
Cotter Pins, 1-4106



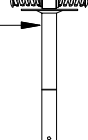
Switch Plate with Bushing  
1-5007



Shim Washer, 1-0134



Slip Clutch with Drive  
Shaft Subassembly, 1-3131



Drive Motor Subassembly,  
115v AC, 1-1313  
240v AC, 1-1314  
24v AC, 1-1317  
~~24v DC, for models prior to May 2005, 1-1318~~ OBSOLETE\*  
~~42v DC, for models prior to May 2005, 1-1319~~ OBSOLETE\*  
48v AC, 1-1323

6v AC, for use with 12/24v DC powered  
models beginning May 2005, 1-1316

\* will have to be replaced with current design KA/KAX sensor

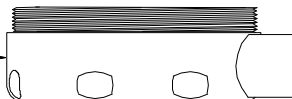
Sealed Bearing, 1-3074



Housing O-Ring, 1-2051



Housing Bottom



Sealed Bearing, 1-3074



Retaining Ring, 1-0075



Lip Seal, 1-2032



Dowel Pin, 1-0103



Coupling, 1-3251



Monitor Technologies, LLC.  
Elburn, IL, USA  
www.monitortech.com  
Phone 630-365-9403  
Fax 630-365-5646

Title  
Monitor Model KA / KAX  
Rotary Paddle Level Monitor

Project  
Replacement Parts

Date  
Feb. 5, 2010  
Dwg No  
SK021204b4  
Pages  
1 of 1