



# INSTALLATION OF HANGING DRUM WIPER

**\*PATENT PENDING\***

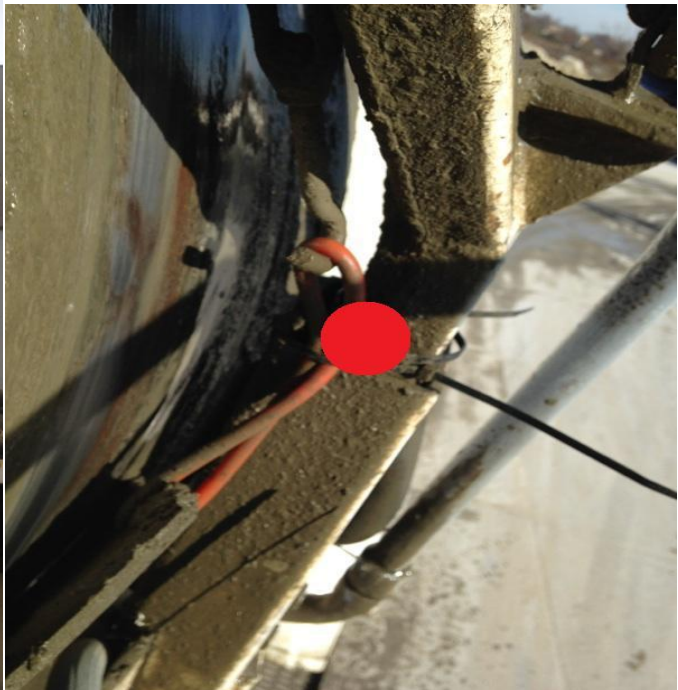
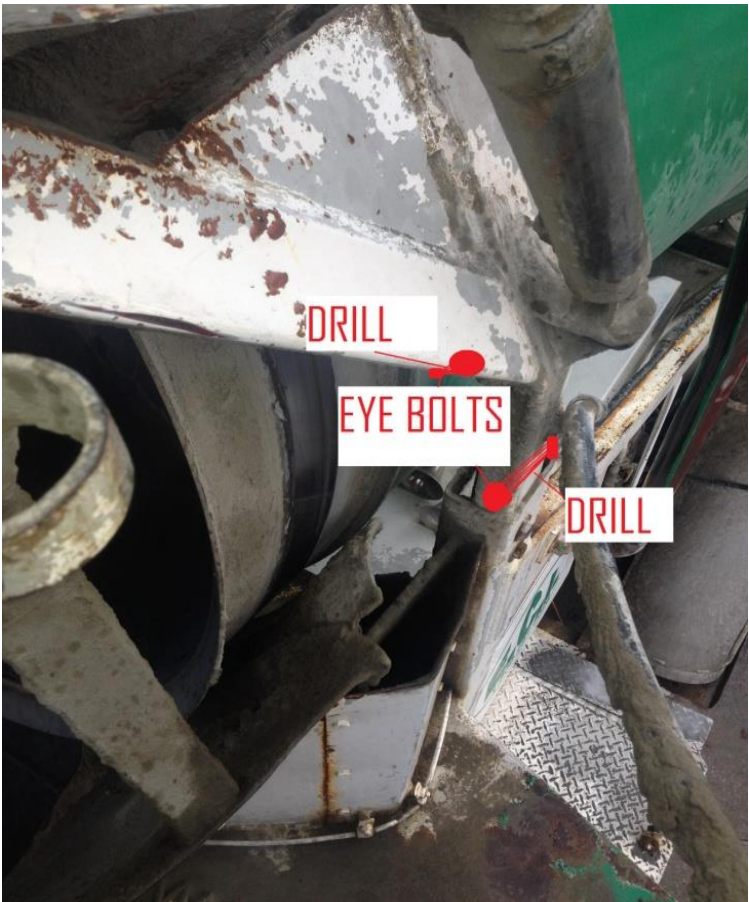
1. Remove existing bolt on drum wiper
2. Drill (4) 5/16" holes in your upright structure
  - a. (See following pages for different models)
3. Insert eyebolts into holes and tighten with ½" wrench
  - a. Since the kits are universal, it is likely you will want to cut off the excess thread from the bolt.
4. Feed the orange loop through the lower eye bolt opening.
5. Use zip fastener to connect the end of the open loop up to upper eye bolt
6. Repeat on opposite side.
7. Tighten zip fastener up to the point where it is barely snug against the drum
8. With the drum rotating the side that is away from the rotation should be just free of tension.
  - a. Always start with less tension and gradually add more.
9. If the drum has excessive buildup on the tract where the new drum wiper will ride against the shell, please clean concrete so that the wiper will be up against clean steel.

**MPPM**

803-233-7913

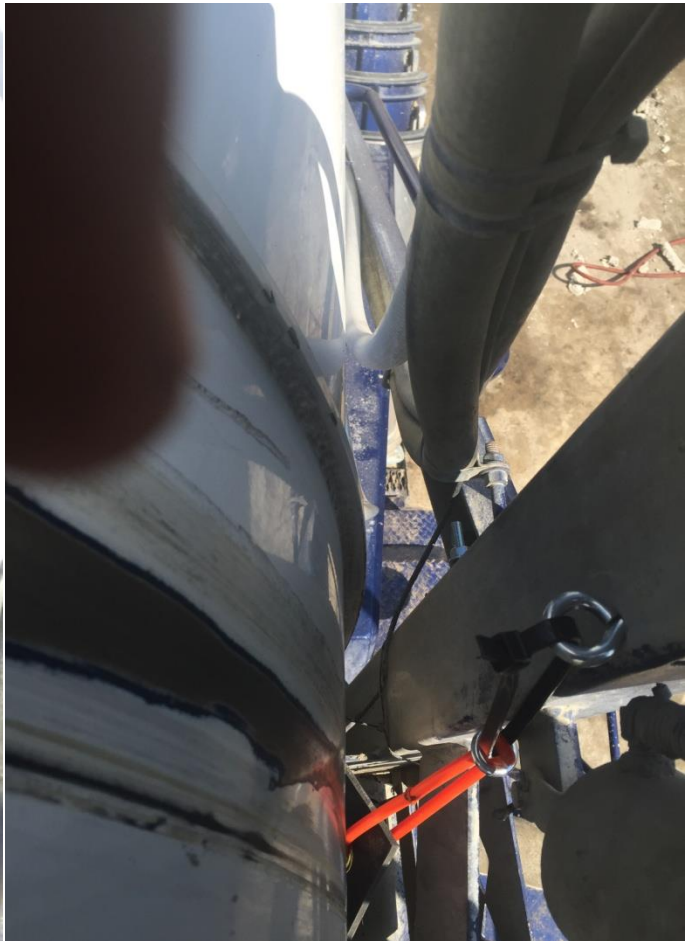
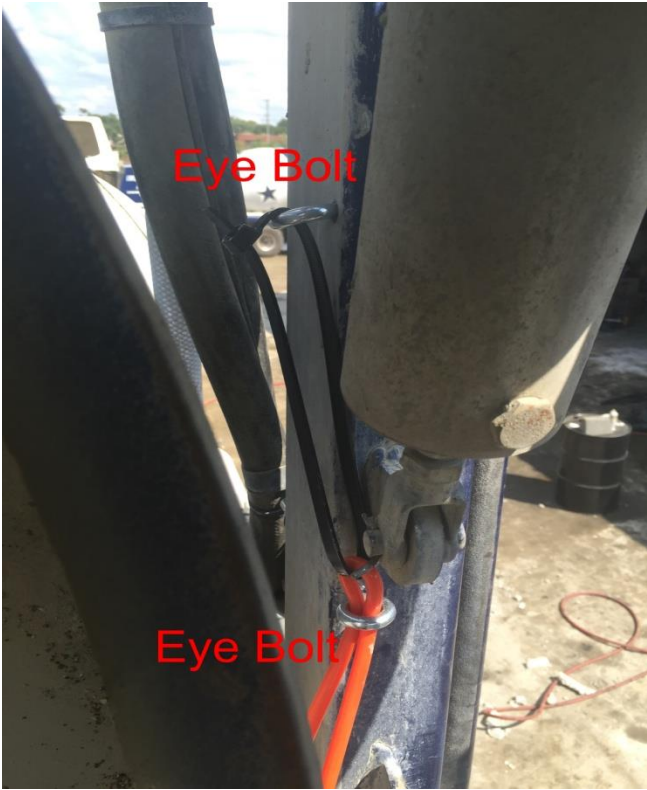
[info@mixerandplantparts.com](mailto:info@mixerandplantparts.com)

# Install Pictures –Advance Pre 2005

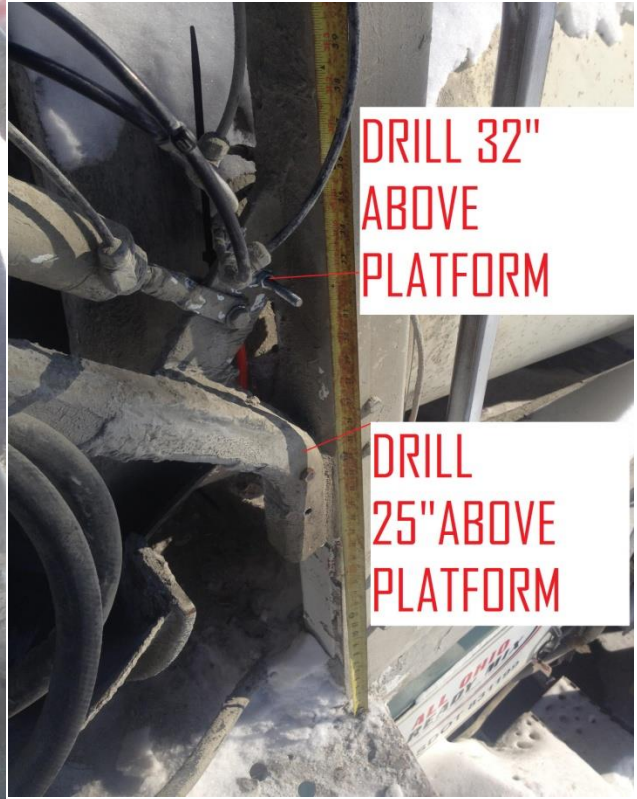
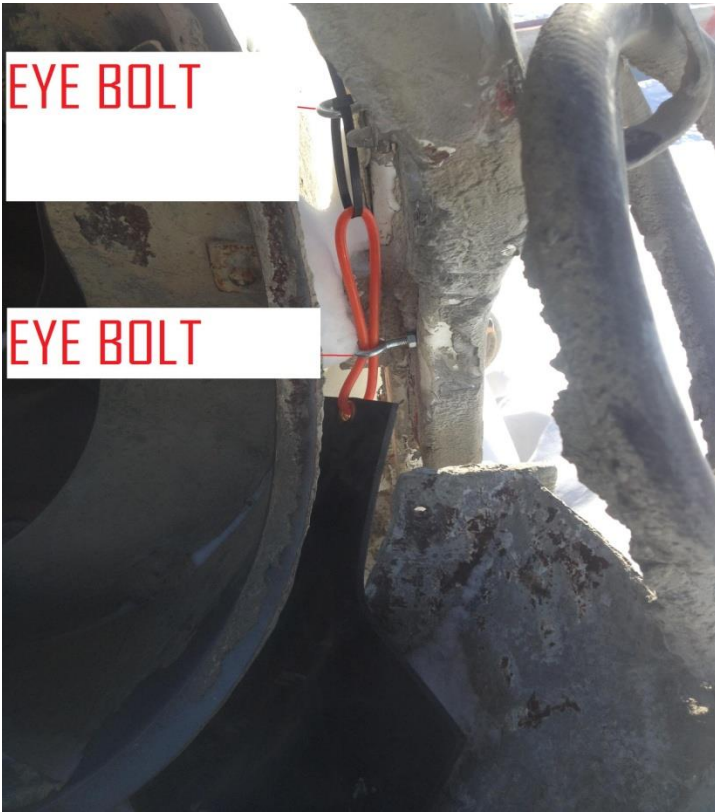




# Install Pictures –Advance 2005 And Current



# Oshkosh Install





# Install Pictures -Kimble

