



DOUGLAS AUTOTECH CORP.

## Model 919 Tilt Only Steering Column

# SERVICE BULLETIN

*This bulletin describes the proper procedure for the removal and replacement of the Steering Column Gap Hider Cover*

*The following steps outline how to remove the Gap Hider Cover and install the new Gap Hider Cover.*

*This procedure MUST be done with the column mounted in the truck, and should take no longer than .5 hrs.*

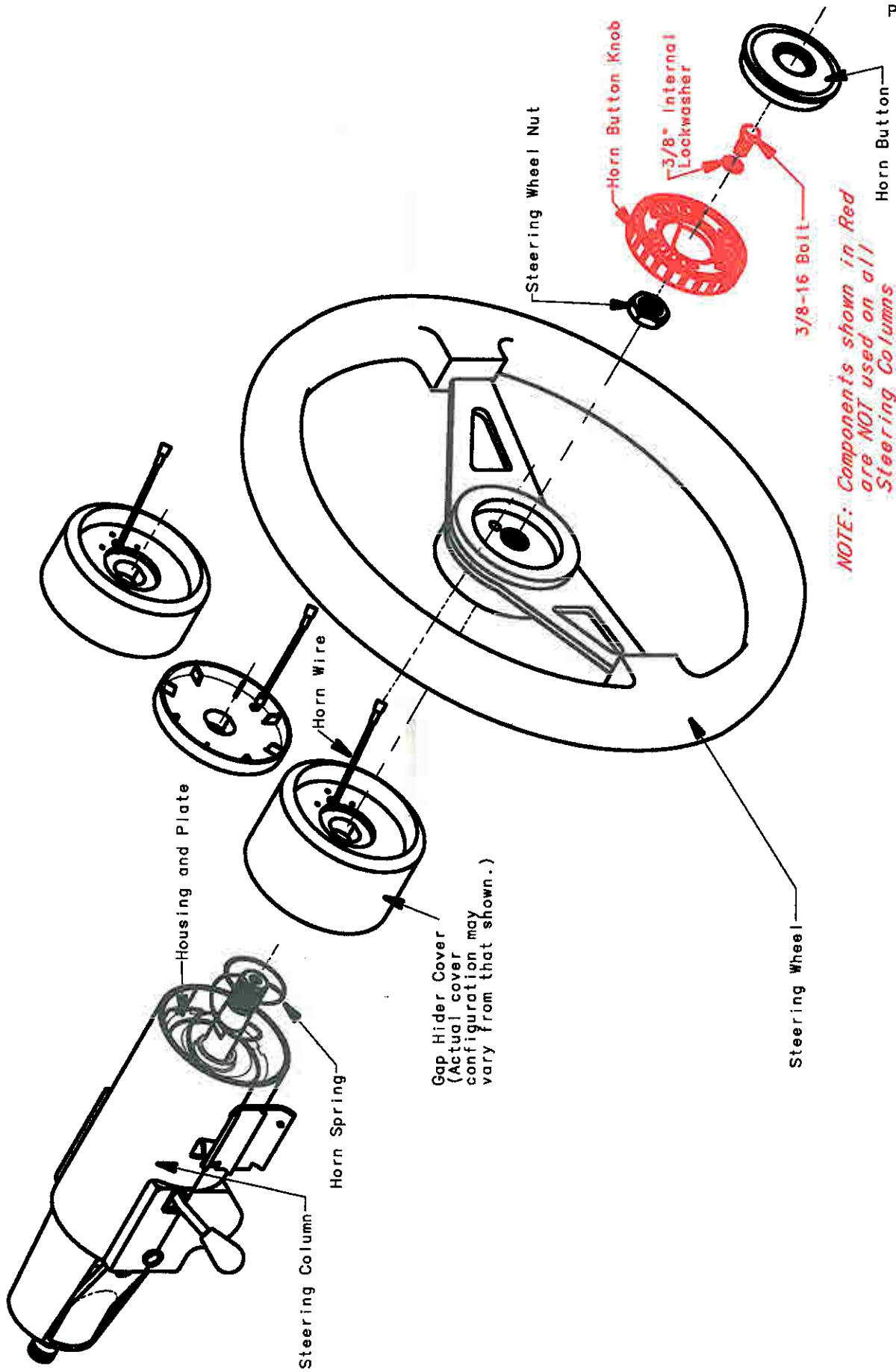
### Parts List

<u>Quantity</u>	<u>Description</u>
1	Gap Hider Cover Kit

### Tool List

<u>Quantity</u>	<u>Description</u>
1	Small Flat Bladed Screwdriver
1	9/16" Socket
1	Steering Wheel Nut Socket
1	Steering Wheel Puller with a Flat End
1	Ft.lbs. Torque Wrench

*These instructions **MUST** be read completely and understood before this procedure begins!*





## Replacing the Gap Hider Cover.

1. Using a Small Flat Bladed Screwdriver remove the Horn Button and disconnect the Horn Wire.
2. Using a 9/16" Socket remove the 3/8-16 Bolt, Horn Button Knob, and Lockwasher (if required).
3. Using the Steering Wheel Nut Socket remove the Steering Wheel Nut.
4. Using a Steering Wheel Puller remove the Steering Wheel.

*NOTE: The end of the Upper Shaft will have to be protected with, the Tool-Puller provided in this kit, from the Steering Wheel Puller. (See Figure 1)*

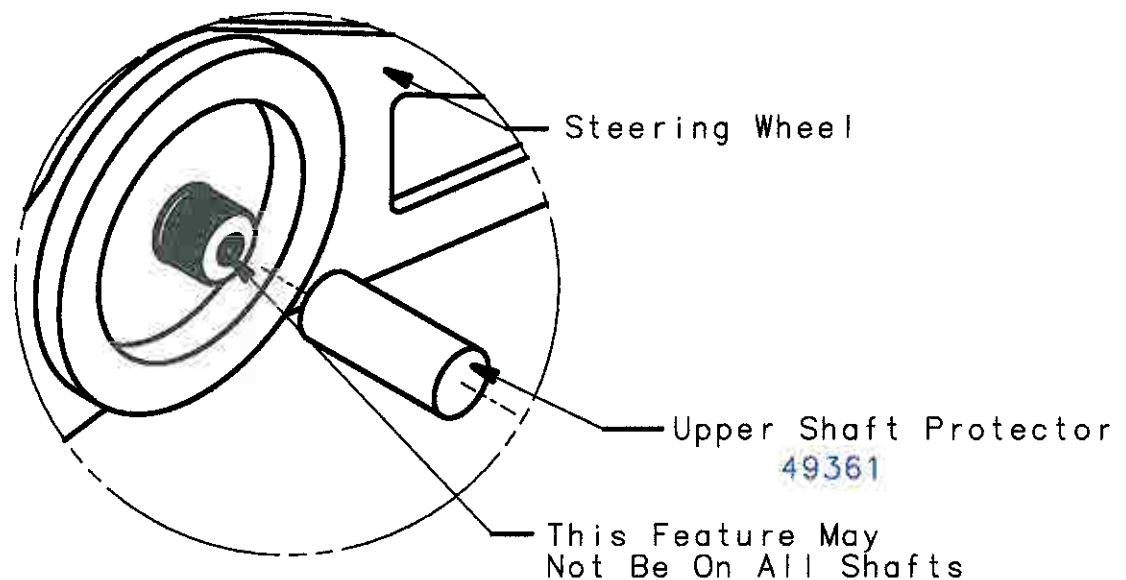
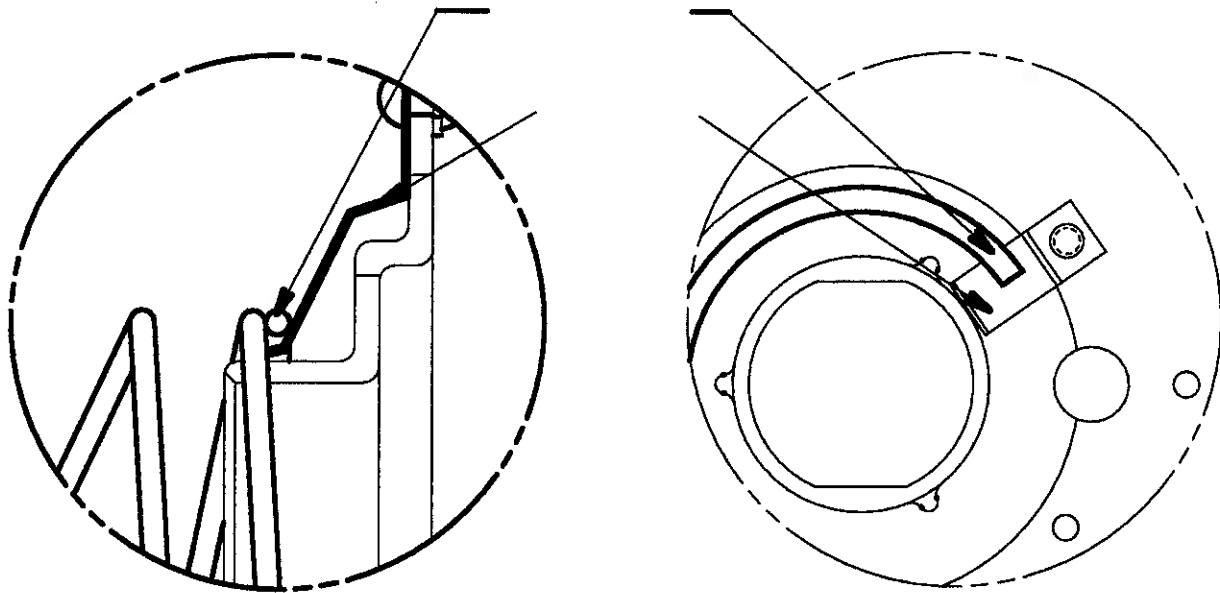


Figure 1

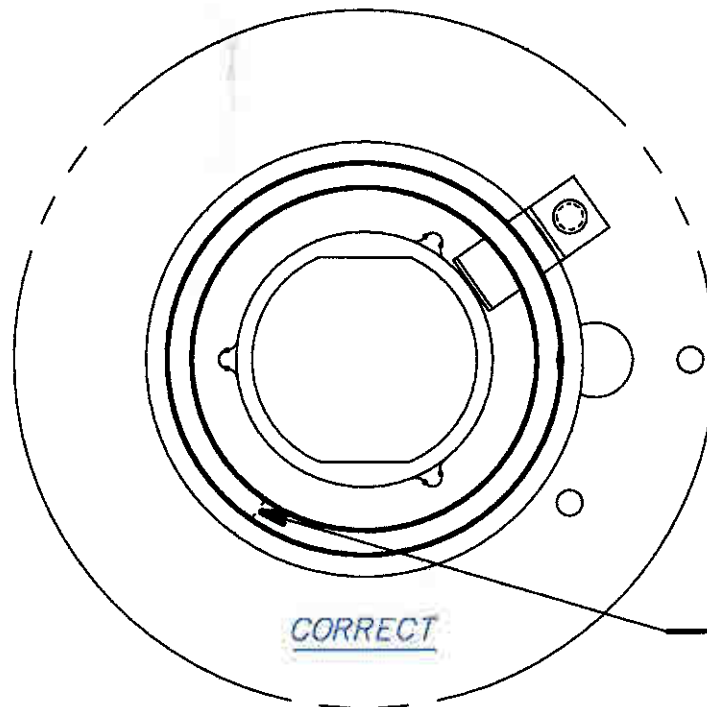
5. Remove the existing Gap Hider Cover.
6. Install the new Gap Hider Cover making sure that the flats on the cover match the flats on the Shaft. Also, make sure that the Spring cut end of the last coil is NOT seated on the Horn Contact. (See Page 4 for proper assembly)
7. Re-install the Steering Wheel.
8. Re-install the Steering Wheel Nut and Torque to OEM specs.

*NOTE: Torque Steering Wheel Nut to 60 Ft.Lbs. Minimum.*



*View showing INCORRECT assembly of  
the Spring to the Horn Contact.*

*NOTE: Check to ensure that the Horn Wire is NOT trapped by any  
part of the assembly.*



*NOTE: Spring Cut Ends MUST be 180° away from both Horn Contacts.  
The Housing and Plate may have to be rotated to accomplish  
this.*

9. Reinstall the Horn Button Knob. Then reinstall the 3/8-16 Bolt and Lockwasher. See Page 2 Isometric for proper assembly order.

*NOTE: If the Horn Button Knob is part of the Steering Wheel skip step 9.*

10. Reconnect the Horn Wire and reinstall the Horn Button.

Critical Check List

1. Make sure as the Steering Column is telescoped all the way in (away from the driver) and out (toward the driver), that the City Horn is NOT activated.
2. Ensure that the City Horn works by pushing the Horn Button. The Horn should sound.

A	5-22-96	JK			Release To Production	
REV.	DATE	DRW	CKD	APR	DESCRIPTION	ECO#