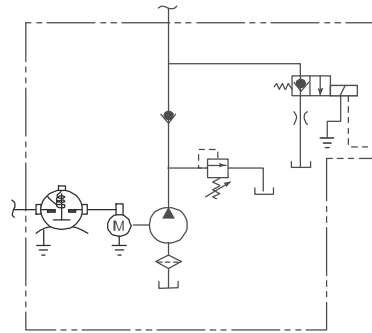


4.16 Model M-719

Description

- Pump / Motor / Reservoir / Valve
- Check Valve
- 2-Way/2-Position Normally Closed Solenoid Operated Lowering Valve
- Externally Adjustable Relief Valve
- 3/8 inch NPT Outlet
- Fixed Orifice in Lowering Circuit. Externally Cleanable
- Vertical Mounting
- Includes Protective Steel Cover

Schematic

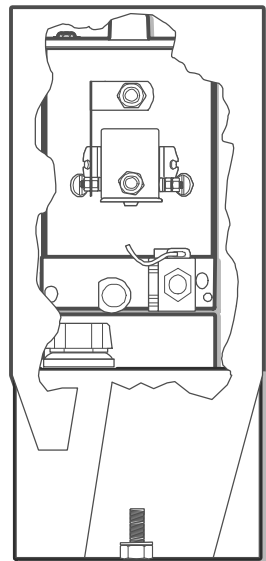


Popular Options

- Control Box and Cord

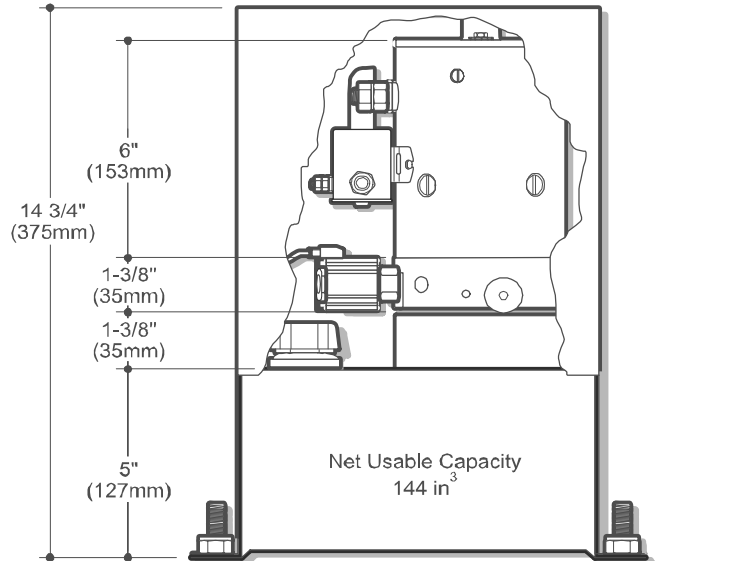
Typical Application:

- Control Discharge Chute on Cement Delivery Truck



SIDE VIEW

6" (153mm)



END VIEW

14 3/4" (375mm)

6" (153mm)

1-3/8" (35mm)

1-3/8" (35mm)

5" (127mm)

Net Usable Capacity
144 in³

1" (26mm)

8 1/4" (210mm)

10 1/4" (260mm)

1" (26mm)

Nominal Dimensions are shown for all basic components. Dimensions may be found for your particular system by deleting the component shown on the unit drawing and adding the dimension for the same item you have selected. Note: Dimensions may vary slightly and should be confirmed by the factory if unit is to be installed in space with minimum clearance.

How to Order Your M-719

Unit shown standard using components referenced in the table below. To build model using other basic components, please reference the page number of the product section also in the table. Order code 50097191XXXX depending on configuration.

Pump	Motor	Voltage	Reservoir (Length)	Mounting Position	Accessories
13-270	08111	12	06385	Horizontal	04560
Ref. Page 43	Ref. Page 44		Ref. Page 118		Ref. Page 141