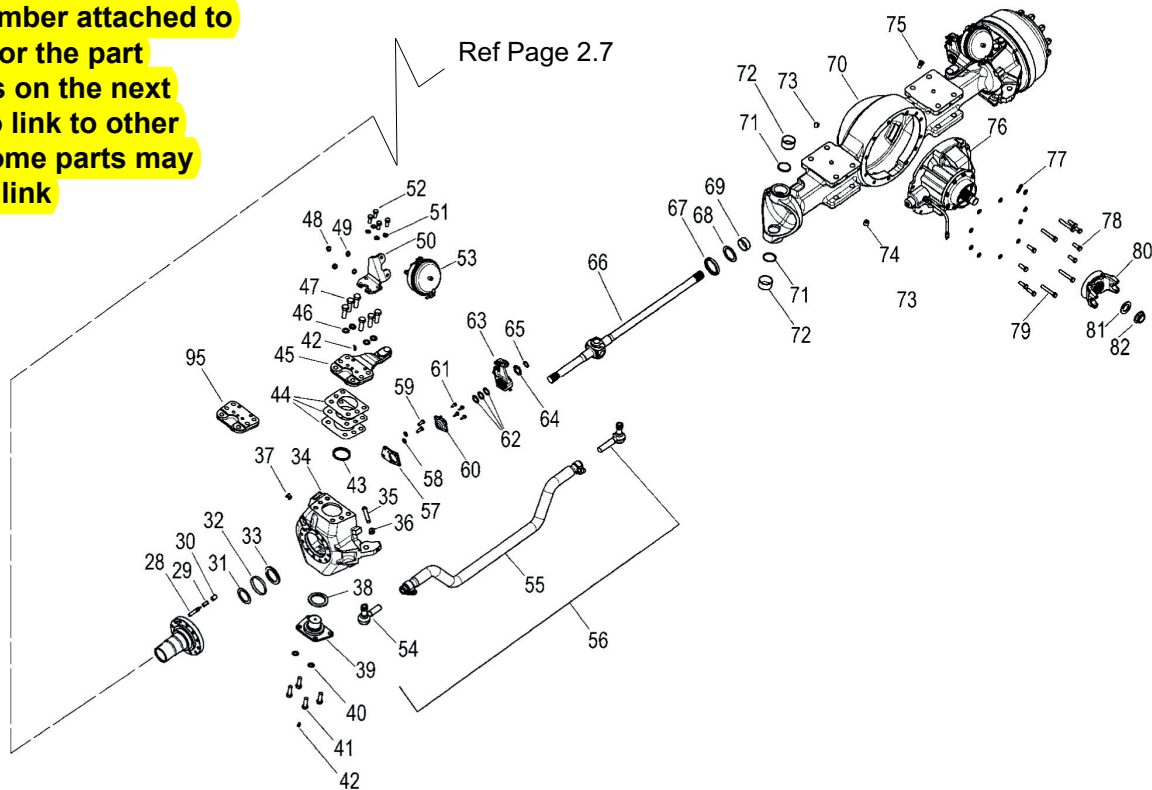


Click number attached to the part or the part numbers on the next pages to link to other parts, some parts may have no link



REF	PART NO.	DESCRIPTION	REF	PART NO.	DESCRIPTION
27		Spindle Assembly (L.H) Spindle Assembly (R.H)	54	23932	Tie Rod End (L.H)
28		ABS Sensor Assembly		14952	Tie Rod End (R.H)
29		ABS Clip	55		Cross Tube w/Clamps (Standard Track) Cross Tube w/Clamps (Wide Track)
30		ABS Bushing	56	14951	Tie Rod Assembly (Standard Track) Tie Rod Assembly (Wide Track)
31	11671	Thrust Washer	57		Camshaft Bracket
32	13007	Oil Seal Sleeve - Inner	58		Washers - Camshaft Bracket
33	11611	Grease Seal - Axle Shaft	59		Capscrews - Camshaft Bracket
34	18090 18578	Steering Knuckle (L.H) Steering Knuckle (R.H)	60		Retainer Assembly
35		Steering Stop Adjusting Screw	61		Screws - Self Tapping
36		Steering Stop Adjusting Nut	62		Spacing Washer (Outer)
37		ABS Bushing - Rubber	63		Automatic Slack Adjuster
38	15009	Thrust Bearing	64		Retainer
39	20486	Lower Knuckle Cap	65		Camshaft Snap Ring
40		Washers - Lower Knuckle Cap	66		Axle Shaft Assembly
41		Capscrews - Lower Knuckle Cap	67	20333	Oil Seal - Axle Shaft
42	31261	Grease Fitting	68	11671	Thrust Washer - Axle
43	11607	Grease Seal - Upper Cap/Steering Arm	69	11932	Inner Axle Shaft Bushing
44	20515 20516 20517	Shim (0.003" Thickness) Shim (0.005" Thickness) Shim (0.010" Thickness)	70		Housing Assembly
45	21382	Steering Arm	71		Socket Plug
46		Washers - Steering Arm	72	11647	King Pin Bushing
47		Capscrews - Steering ARM	73	11690	Lube Fill Plug
48		Nut - Air Brake Chamber	74	11690	Lube Drain Plug
49		Washers - Air Brake Chamber	75	14985	Breather Assembly
50		Chamber Bracket (L.H) Chamber Bracket (R.H)	76		Carrier Assembly
51		Washers - Chamber Bracket	77		Washers - Carrier Housing
52		Capscrews - Chamber Bracket	78		Capscrews (Short) - Carrier Housing
53		Air Brake Chamber (Type 30 Chamber) Air Brake Chamber (Type 24 Chamber)	79		Capscrews (Long) - 160 Carrier Housing
			80		Yoke
			81		Washer - Yoke
			82	23479	Nut - Yoke

WHEN ORDERING PARTS, SPECIFY MODEL NUMBER, SERIAL NUMBER AND DESCRIPTION OF PARTS REQUIRED

	AXLE HOUSING, MERITOR	DATE: Released 01-2016	GROUP 2
		MODEL: FD	
		PAGE: 2.8	