

Ø Feeder
010 = 114
015 = 168
017 = 193
020 = 219
025 = 273
030 = 323

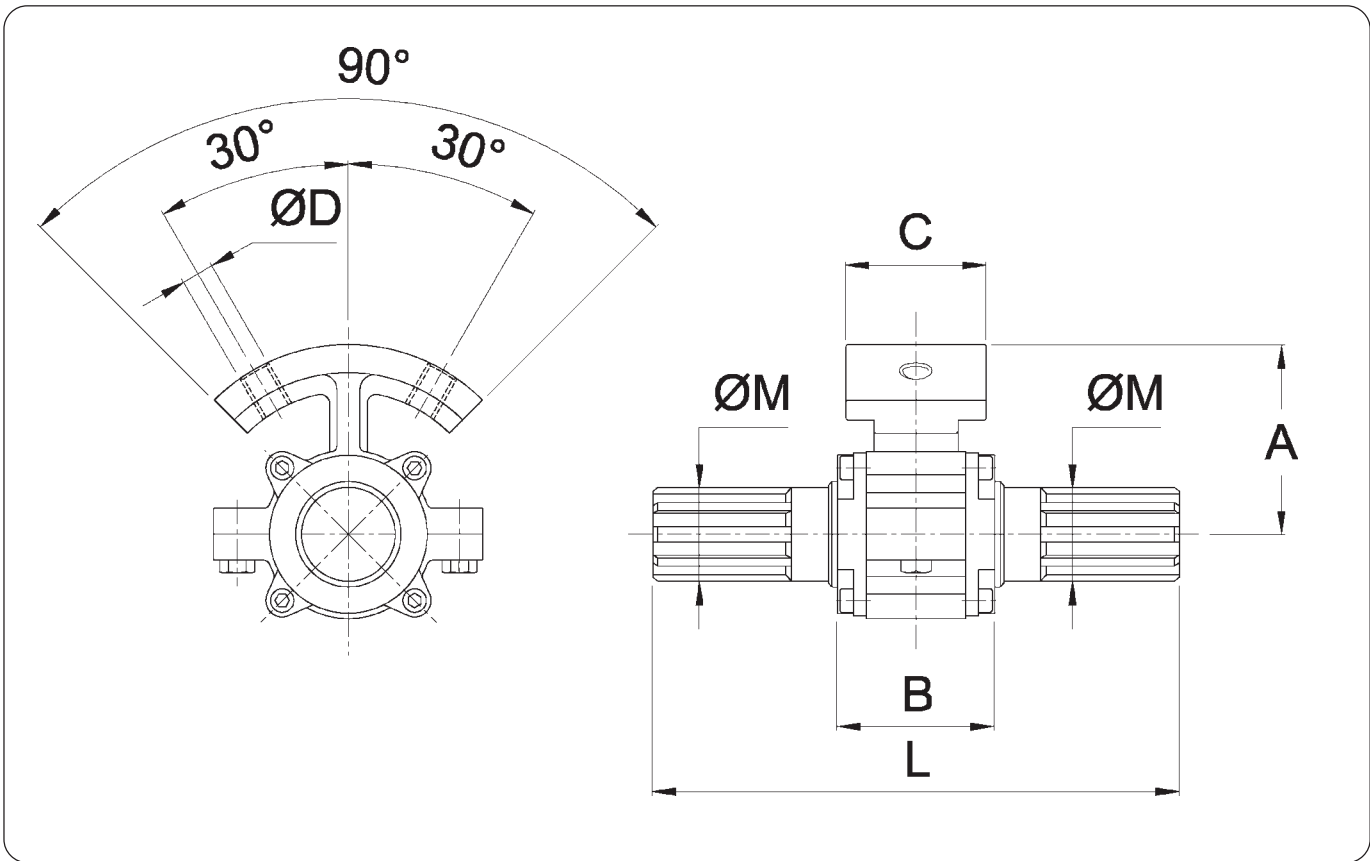
X	L	R				B				T	4	4
---	---	---	--	--	--	---	--	--	--	---	---	---

028 = Ø114
040 = Ø168 - 219 - 273 - 323

Code	Ø Shaft	Ø Feeder	A	B	C	Ø D	E	L	Ø M DIN 5482	Kg
XLR028B010T44	028	114	54	35	30	M10	8	170	28x25	1.7
XLR028B012T44	028	139	66.5	35	30	M10	10	170	28x25	1.8
XLR040B015T44	040	168	80	55	51	M14	15	245	40x36	3.5
XLR040B017T44	040	193	92.5	55	51	M14	15	245	40x36	3.9
XLR040B020T44	040	219	105.5	55	51	M14	15	245	40x36	4.3
XLR040B025T44	040	273	132.5	55	51	M14	15	245	40x36	4.5
XLR040B030T44	040	323	157.5	55	51	M14	15	245	40x36	5

CAST ALUMINIUM HANGER STRUCTURE WITH INCORPORATED SELF-LUBRICATING BUSH

The hanger is made up in two parts to enable dismantling without removing the spiral.



Code	Ø Shaft	Ø Feeder	A	B	C	Ø D	L	Ø M DIN 5482	kg
XLY045H015T11	45	168	80	75	62	M14	225	40 x 36	4
XLY045H017T11	45	193	92.5	75	62	M14	225	40 x 36	4.2
XLY045H020T11	45	219	105.5	75	62	M14	225	40 x 36	4.5
XLY045H025T11	45	273	132.5	75	62	M14	225	40 x 36	4.7
XLY045H030T11	45	323	157.5	75	62	M14	225	40 x 36	5