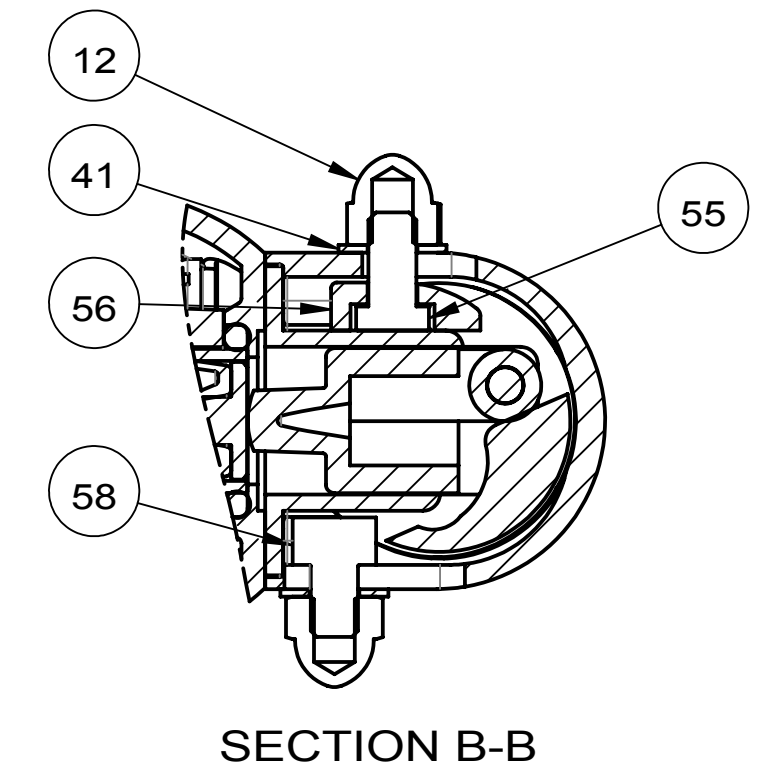
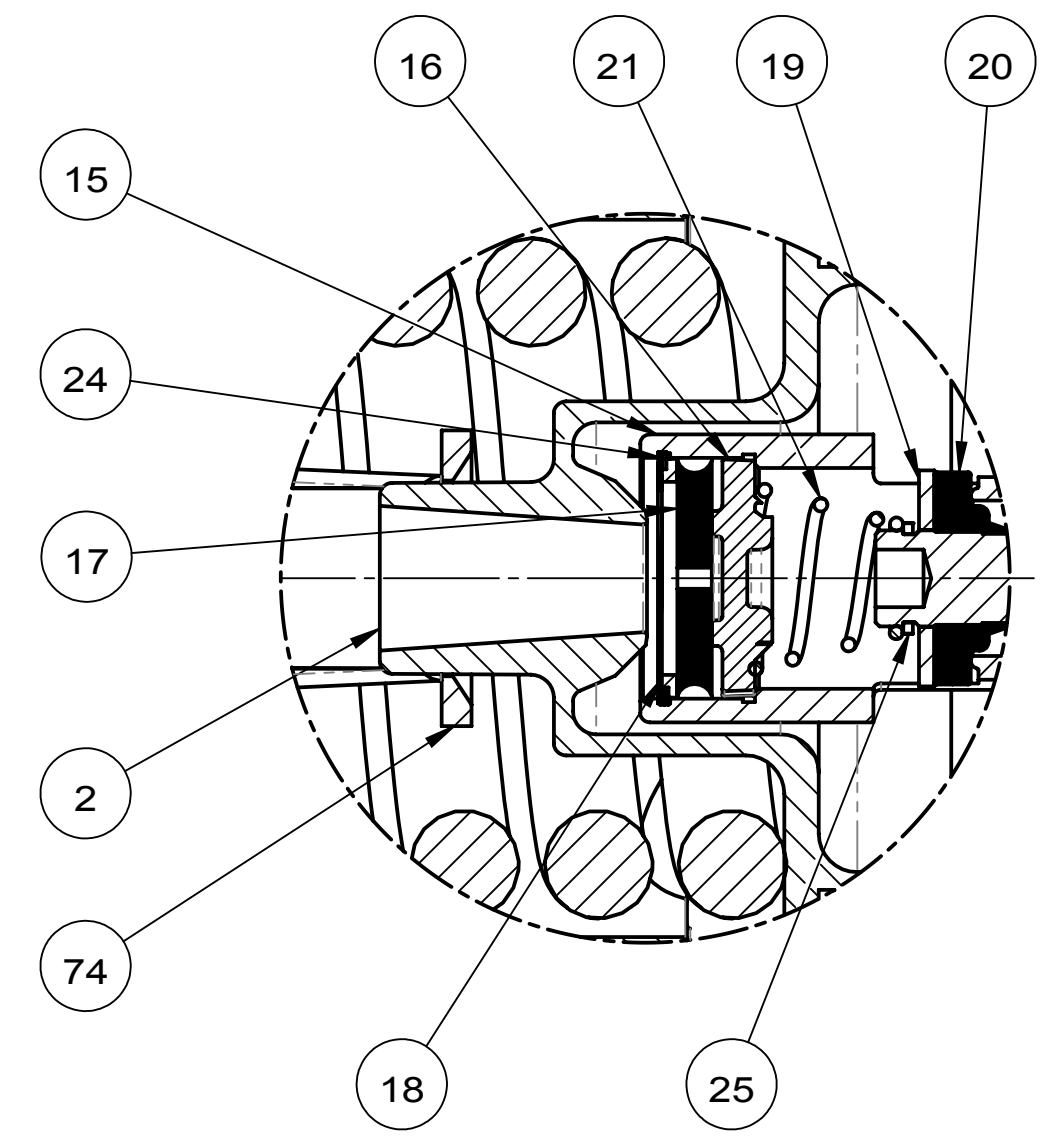
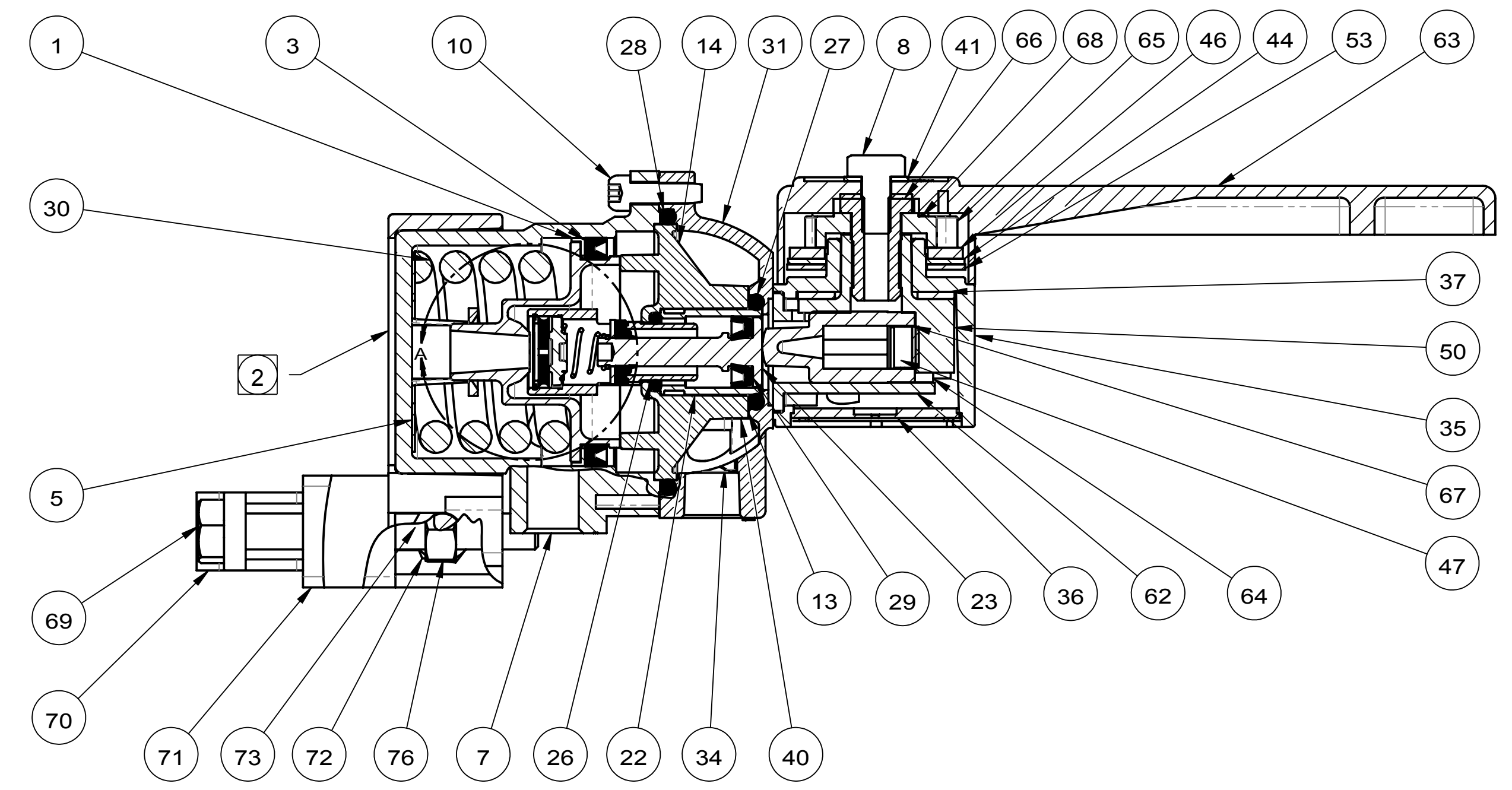
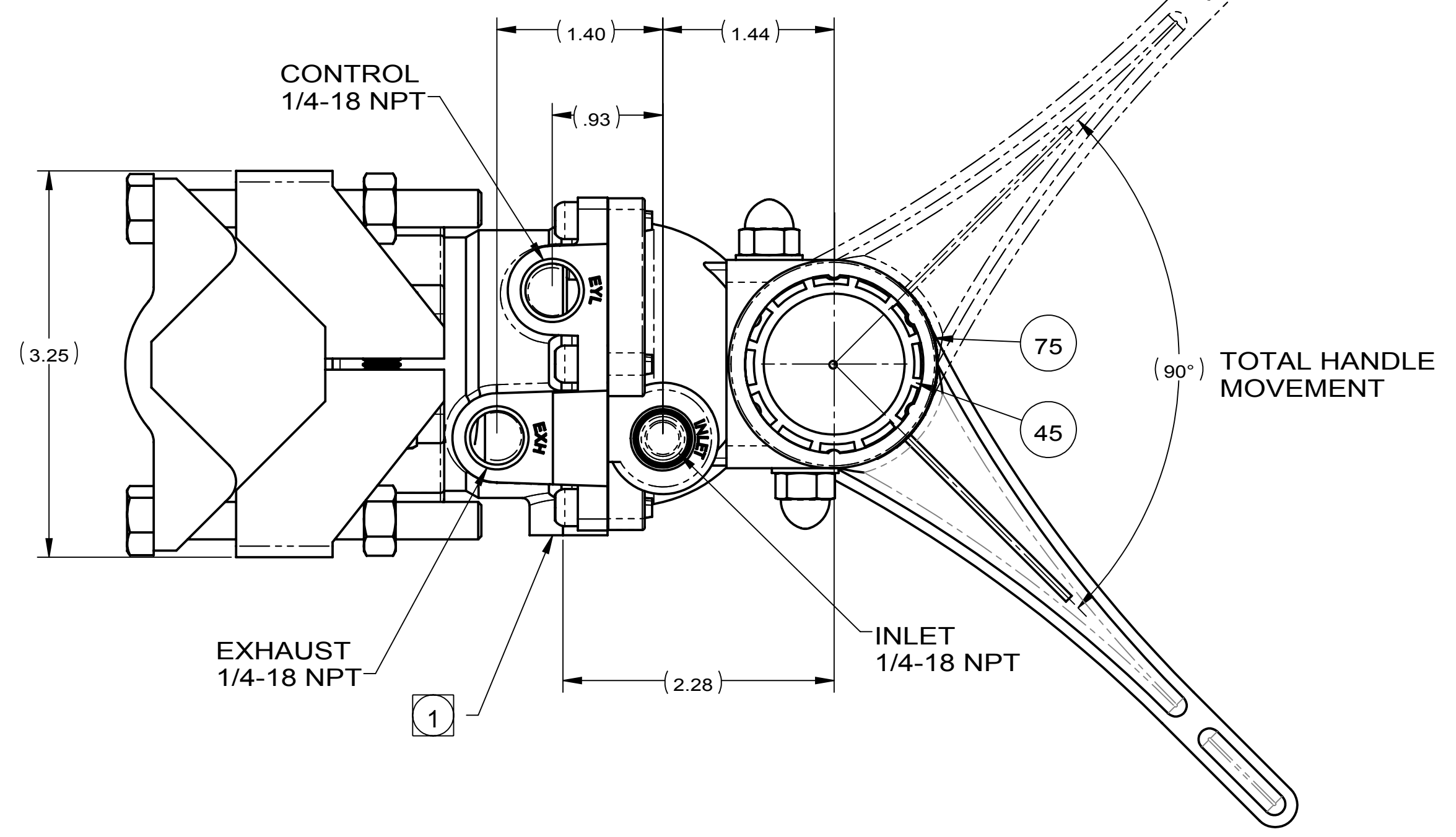
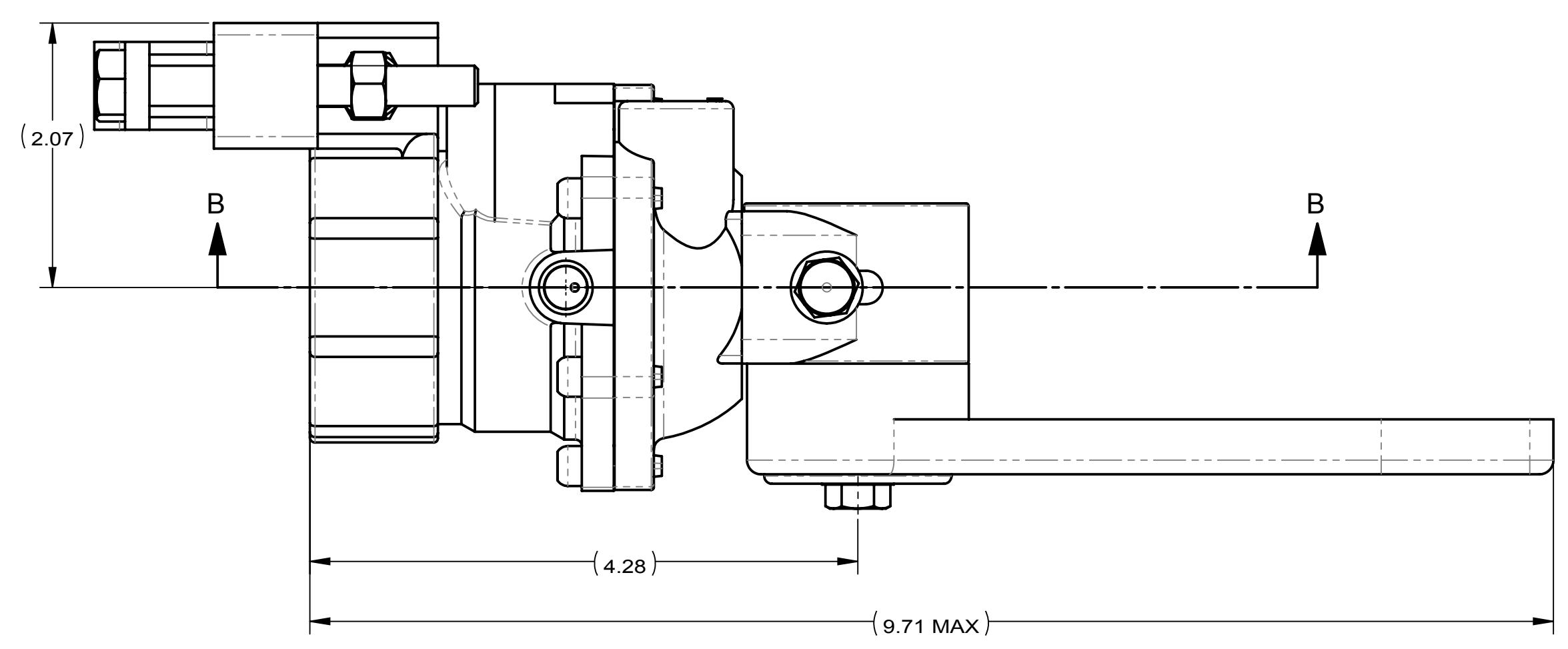


DWG NO.	113730	REV	W	1	
REVISIONS					
ZONE	REV	DESCRIPTION OF CHANGE	APPROVED	ECN NO.	DATE
	V	MOVED FROM 113713 FAMILY DRAWING, AND RELEASED AS STAND ALONE ASSEMBLY DRAWING FOR WM-606-C2C. UPDATED VIEWS REMOVED WEP-024, CHANGED FORM NPTF TO NPT.	KEN	40979	07/28/00
ALL ALL B7, C5, C8, C5, A4	W	(1) UPDATED TO THE CURRENT DRAWING STANDARDS; (2) ALL DIMENSIONS WERE CHANGED INTO REFERENCE DIMENSIONS; (3) 402084 (ITEM 30) WAS 101367; (4) DELETE THE DIMENSION Ø1.815 ± .435, 4.00 (102), 1.56(34); (5) ADD NOTES 1, 2		011258	02/04/15

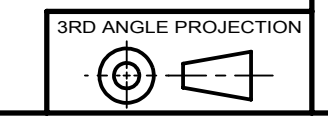


SECTION B-B



DETAIL A
SCALE 2 : 1

- NOTES - UNLESS OTHERWISE SPECIFIED:
- 1 115182 PIPE PLUG.
 - 2 LABEL PER WQI-070-003 LOCATE APPROXIMATELY AS SHOWN



UNLESS OTHERWISE SPECIFIED, DIMENSIONS ARE IN INCHES PER ASME Y14.5M		PROPRIETARY AND CONFIDENTIAL - ALL INFORMATION ON THIS DRAWING IS CONFIDENTIAL AND THE SOLE PROPERTY OF WILLIAMS CONTROLS, INC. ANY REPRODUCTION IN PART OR AS A WHOLE WITHOUT WRITTEN PERMISSION OF WILLIAMS CONTROLS IS PROHIBITED.				14100 SW 72ND AVENUE PORTLAND, OR 97224 (503) 684-8600 FAX (503) 624-3836	
TOLERANCES .X ± .030 .XX ± .010 .XXX ± .005 ANGLES ± .5°		FINISH (EXCEPT ASSEMBLIES):		TITLE VALVE, PRESS. REG			
MATERIAL: SEE SEPARATE PARTS LIST		DRAWN: LZ DATE: 02-04-2015		SIZE: D CAGE CODE: 11331		DWG NO.: 113730	
		MODEL SERIES: WM-606-C2C PROJECT: 1893		SCALE: 1:1		REV: W SHEET: 1 OF 1	