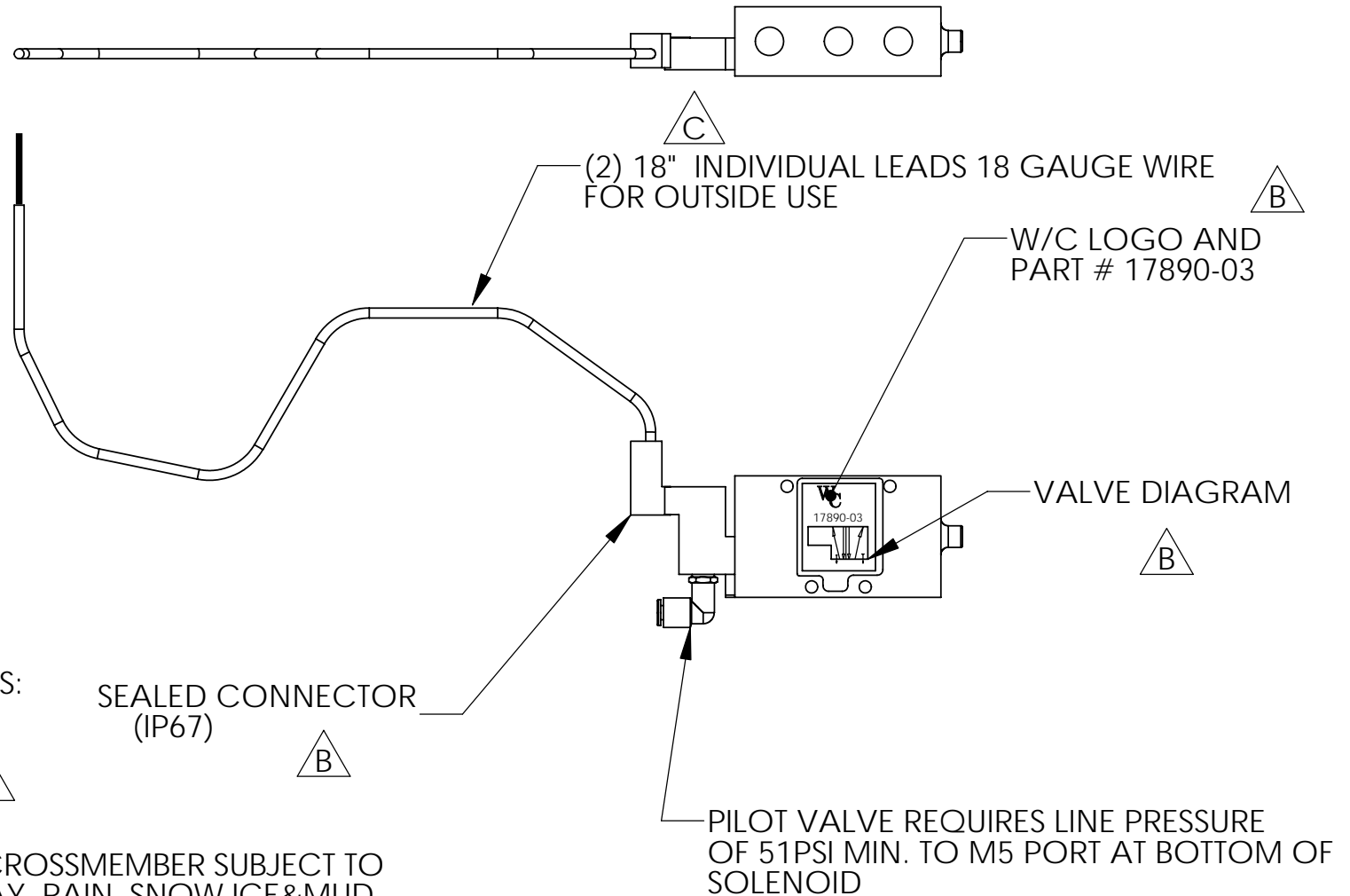


REV.	DESCRIPTION	ECN	DATE	BY
A	NEW DRAWING	4094	7/14/06	JJB
B	UPDATED PER VENDOR	4314	11/28/06	JFF
C	CLARIFIED WIRE LEADS	C4519	3/08/07	JFF

NOTE: Ports 12 and 14 are plugged internally when the body is used on a double solenoid or single solenoid valve. Dirt will not be able to travel into the valve bore via these ports.



OPERATING CONDITIONS:


MAX TEMP: 130° F
 MIN TEMP: - 40° F
 VOLTAGE: 9-13.8 VDC
 PORTS: 1/4 NPT.

LOCATION:

1. OUTSIDE TRUCK ON CROSSMEMBER SUBJECT TO DIRECT SUN, ROAD SPRAY, RAIN ,SNOW,ICE&MUD
2. INSIDE TRUCK IN TOOLBOX AREA

AIR CONDITIONS: FILTER IN SYSTEM , BUT DEBRIS COMMON. SOME ANTIFREEZE USED IN SYSTEMS IN NORTHERN CLIMATES. VARIOUS LUBRICANTS USED IN SYSTEMS

VALVE TO BE BASED ON 17890-01 SINGLE PRESSURE

DESCRIPTION:		 Watson Suspension Systems		
DESCRIPTION				
SHEET: 3 OF 4				
DATE:	SCALE:	DRAWN BY:	SIZE:	DRAWING NO:
7/24/06	1:3	JJB	A	17890-03