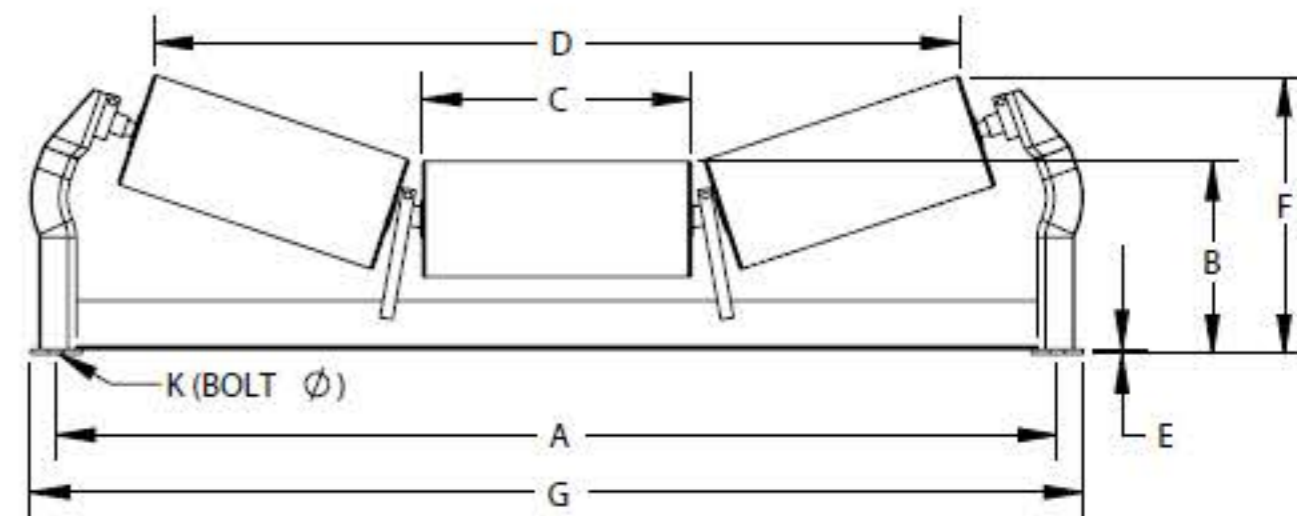
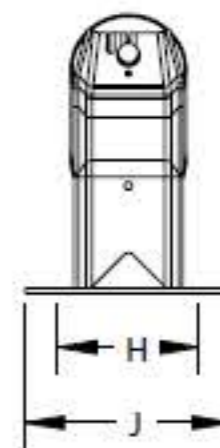


TROUGHING IDLER – 4-1/2" DIAMETER

4-1/2" PART NUMBER	BW	A	B	C	D	E	F	G	H	J	K	WT (#)
CB45-20E-18	18	27	7 1/2	6-1/2	20-3/8	1/4	9-7/16	29	6	8	5/8	22
CB45-20E-24	24	33	7-1/2	8-1/2	26-1/8	1/4	10-1/8	35	6	8	5/8	25
CB45-20E-30	30	39	7-1/2	10-1/2	31-7/8	1/4	10-13/16	41	6	8	5/8	30
CB45-20E-36	36	45	7-1/2	12-1/2	37-5/8	1/4	11-1/2	47	6	8	5/8	32
CB45-20E-42	42	51	7-1/2	14-1/2	43-1/4	5/16	12-9/16	53	7-1/2	8	5/8	35
CB45-20E-48	48	57	7-1/2	16-1/2	49	5/16	13-1/4	59	7-1/2	8	5/8	38
CB45-35E-18	18	27	7-1/2	6 1/2	17-23/64	1/4	11-9/32	29	6	8	1/2	41
CB45-35E-24	24	33	7-1/2	8-1/2	22-5/8	1/4	12-13/32	35	6	8	1/2	48
CB45-35E-30	30	39	7-1/2	10-1/2	27-29/32	1/4	13-9/16	41	6	8	1/2	57
CB45-35E-36	36	45	7-1/2	12 1/2	33-3/16	1/4	14-23/32	47	6	8	1/2	65
CB45-35E-42	42	51	7-1/2	14-1/2	38-15/32	5/16	15-27/32	53	6	8	1/2	78
CB45-35E-48	48	57	7-1/2	16-1/2	43-3/4	5/16	17	59	6	8	1/2	90



20°



35°

** Also available in rubber cushioned roller. Designated by (EI).

Note: Also available in 4" diameter; dimensions are subject to change without notice.