

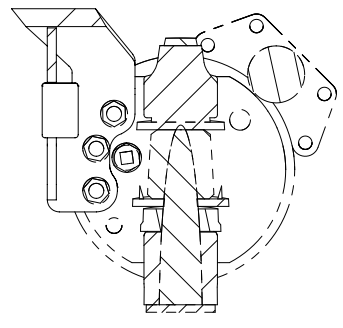
4

3

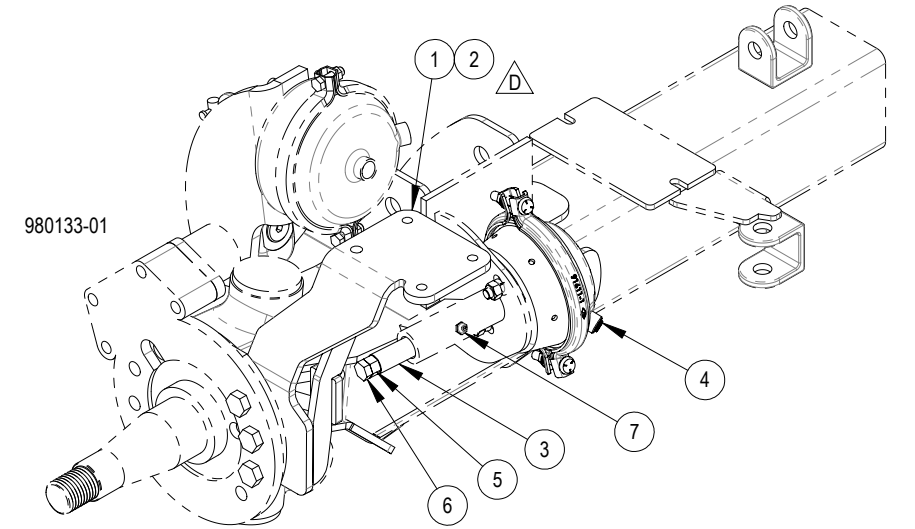
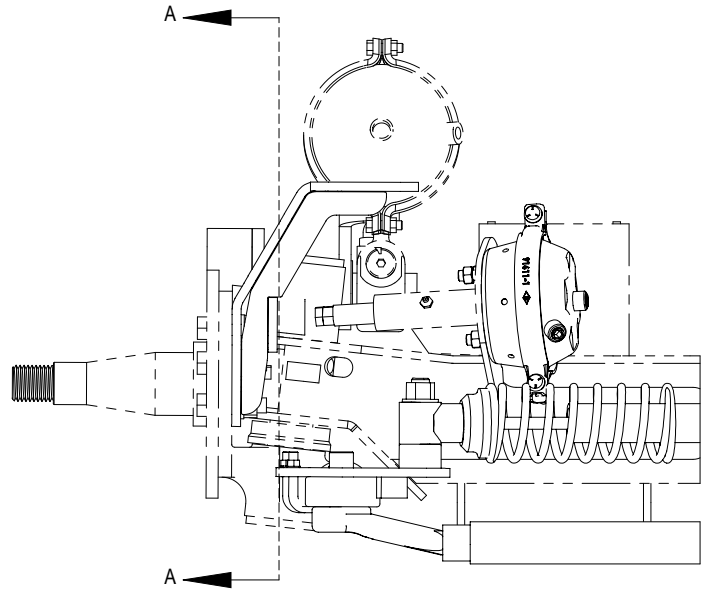
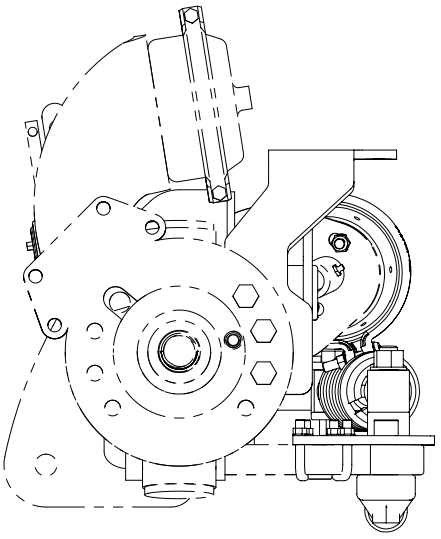
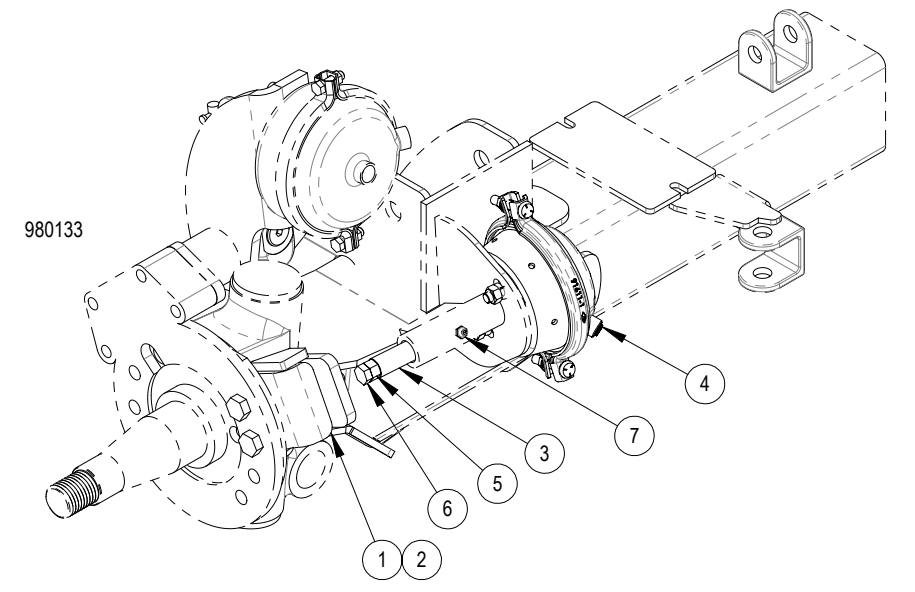
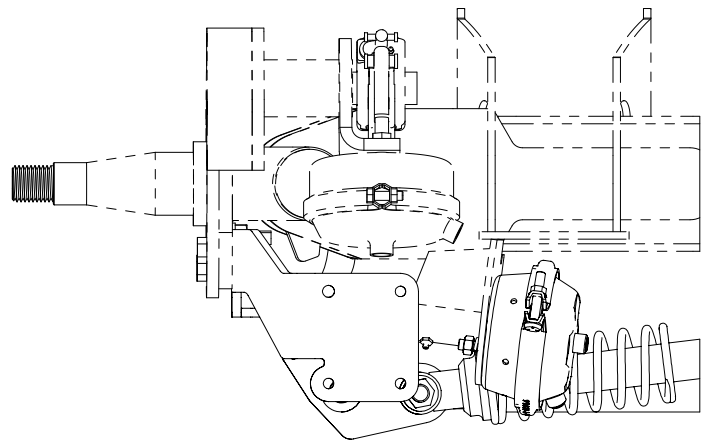
2

1

REV.	DESCRIPTION	CN	DATE	DRWN BY	CHKD BY
B	CHARTED ITEM #1 & #2, AND REMOVED CHAMBER BRACKETS	C-5108	01/16/2008	EFR	-
C	ITEM #4 WAS 10335-01	2785	11/05/2013	CRM	-
D	REVISED MODEL AND DRAWING	402358	03/29/2017	CRM	MRB



SECTION A-A



NOTES (UNLESS OTHERWISE SPECIFIED):

- 1. THE PROVIDED CAD MODEL IS THE GOVERNING AUTHORITY FOR THE BASIC FORM, LOCATION, ORIENTATION AND DIMENSIONAL CHARACTERISTICS OF ALL PART FEATURES.

ITEM NO.	980133/QTY.	980133-01/QTY.	PART NUMBER	DESCRIPTION
1	1	-	990246-10	PAD, CENTERING LH
1	-	1	990671-10	BRACKET, FENDER ASSY LH
2	1	-	990246-20	PAD CENTERING, RH
2	-	1	990671-20	BRACKET, FENDER ASSY RH
3	2	2	90595-01	ADJUSTABLE PUSH ROD
4	2	2	10335-1.50-02	CHAMBER, BRAKE
5	2	2	10342	NUT HEX .50 UNF GR C
6	2	2	17385	CAPSCREW .50X1.25 UNF G8
7	2	2	11448	GREASE FITTING

ALL WATSON AND CHALIN INTELLECTUAL PROPERTY & PROPRIETARY INFORMATION IS PROTECTED BY U.S. & INTERNATIONAL COPYRIGHT LAWS. ANY USE WITHOUT THE EXPRESS WRITTEN PERMISSION OF WATSON AND CHALIN IS PROHIBITED.	UNLESS OTHERWISE SPECIFIED DIM ARE IN INCHES TOL ON ANGLES ± 1.0° X.X ± .1 X.XX ± .06 X.XXX ± .030 INTERPRET DIM AND TOL PER ASME Y14.5-2009	THIRD ANGLE PROJECTION DIMENSIONS ADHERE TO ASME Y14.5-2009	STEEL PART NO.	SUSPENSION MODEL:	DATE:	SCALE:	WEIGHT:	WATSON AND CHALIN MANUFACTURING INC 725 EAST UNIVERSITY DRIVE MCKINNEY TEXAS 75069
			-	SL1193THL	11/14/2007	1:8	-	
			PERIMETER	PREVIOUS ASSY:	DRAWN BY:	SIZE:	SHEET:	TITLE: CENTERING KIT W/ ADJ. PUSH ROD & BUMPER BRACKET
			-	35813	EFR	B	1 OF 1	DWG NO. 980133

4

3

2

1

B

B

A

A