

009600.idw, 10/30/2014 10:32:14 AM, Fit to Page

4 3 2 1

REVISION HISTORY					
ZONE	REV	DESCRIPTION	DATE	ECO	REV BY
--	0	RELEASED	7/8/09	09-0332	KDM
B2	1	INCREASED DAMPING VALUES	4/18/13	13-0245	JAG
A4	2	ADDED NOTE 5: LABEL WITH HAUX PART AND REVISION NUMBER	7/17/2013	13-0485	JAG

UNLESS OTHERWISE NOTED TOLERANCES ARE:
 X: +/- .1
 XX: +/- .06
 XXX: +/- .030
 ANGULAR: +/- .5
 TORQUE: +10%/-0%

DRAWN BY: MUTZNER
 DATE: 7/8/2009
 CHECKED BY: D.OKEL
 APPROVED BY: M.DANKOW
 MODIFIED BY: JAG
 DATE: 7/17/2013

DRAWING No. 009600
 REVISION 2

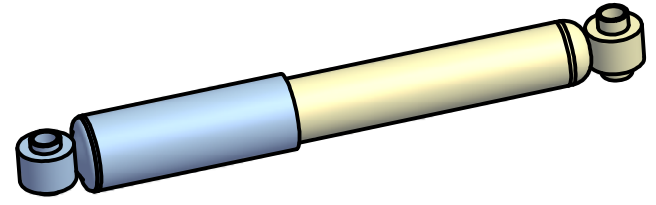
ECO No. 13-0485
 Custom Size n/a
 SCALE n/a
 TITLE SHOCK (TENNECO)
 (inches)



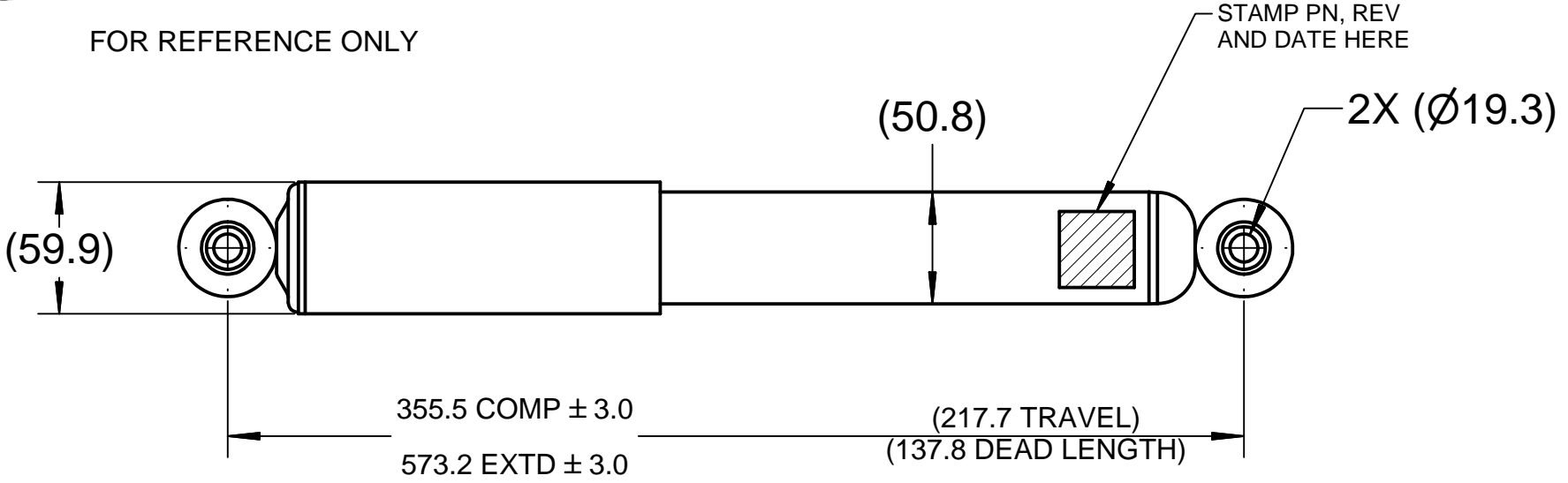
This print remains the property of Hendrickson. All information contained therein is confidential. It is loaned, subject to return on demand and on the expressed condition it may not be copied or used for any other purpose than for which it was loaned.

DIMENSIONS ADHERE TO ANSI Y14.5M-1982 WELDS CONFORM TO AWS D1.1 PAGE 1 OF 1

ACCEPTANCE VALUES			
DAMPING FORCE (N) \ SPEED (m/s)	0.12 m/s	0.34 m/s	0.68 m/s
REBOUND	1600 - 2400 N	2700 - 3500 N	4000 - 4800 N
COMPRESSION	2650 - 3450 N	4550 - 5350 N	5200 - 6200 N



FOR REFERENCE ONLY



- NOTES:
- VENDOR: TENNECO INC
 - VENDOR PART NUMBER: OE22188
 - REFERENCE VENDOR PRINT IN VAULT FOR ADDITIONAL DIMENSIONS.
 - DIMENSIONS SHOWN IN METRIC.
 - STAMP HAUX PART NUMBER, REVISION LEVEL NUMBER, AND DATE CODE ON SHOCK BODY AS SHOWN.

MPPM
 Mixer & Plant Parts Mfg
 (877) 256-3326
 www.mixerandplantparts.com

4 3 2 1